

Slide Seminar

37th European Congress of Cytology - 2012

Croatia

Dr. Radhika Kottu

Associate Professor

Department of Pathology

Sri Venkateswara Institute of Medical Sciences

Tirupati, Andhra Pradesh, INDIA

Case No. 1

Clinical History;

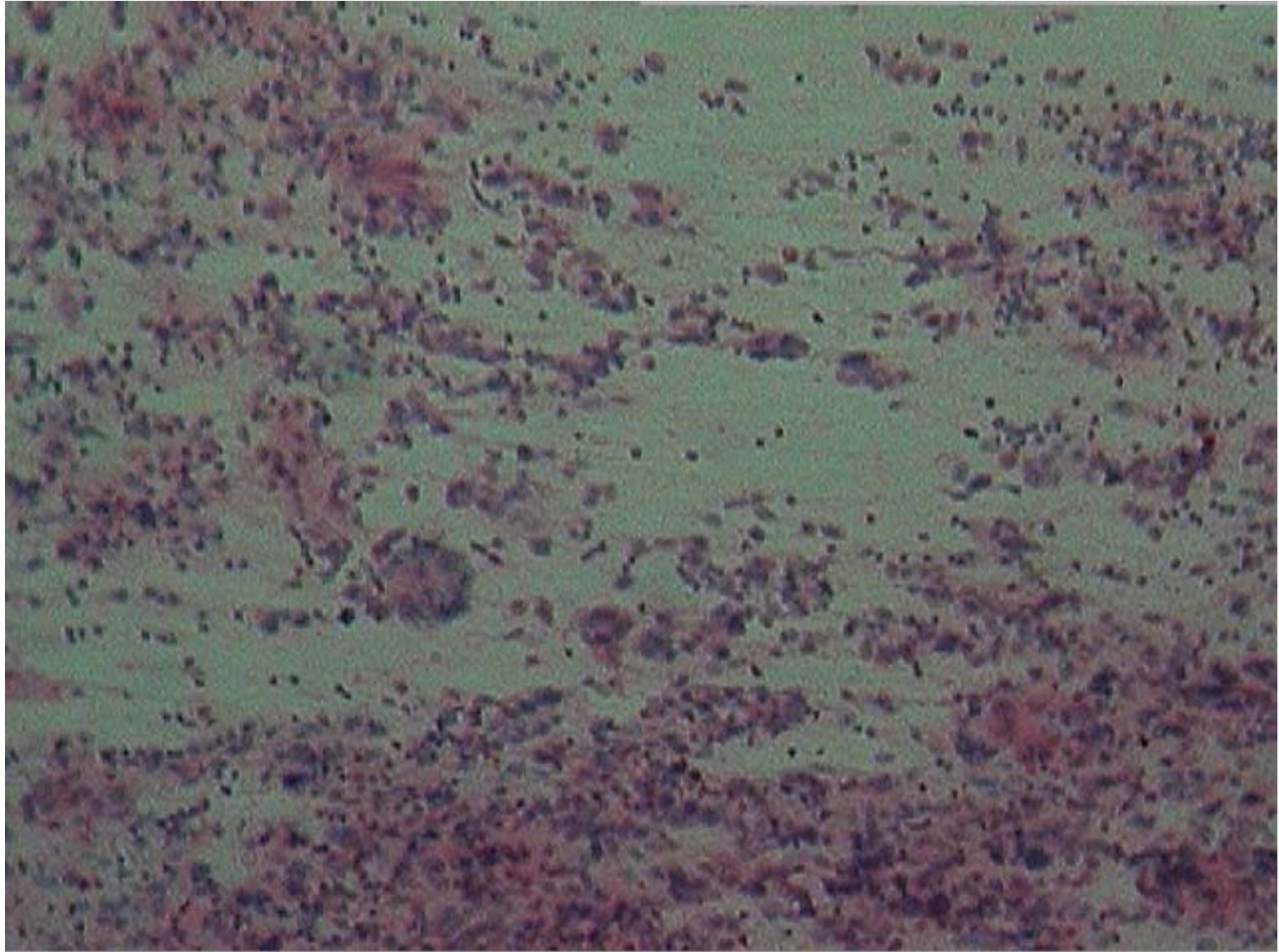
- A female child aged 5 years born to consanguinous couple
- Headache, Vomiting - 2 weeks
- Weakness of left upper and lower limbs - 10 days

Imageology

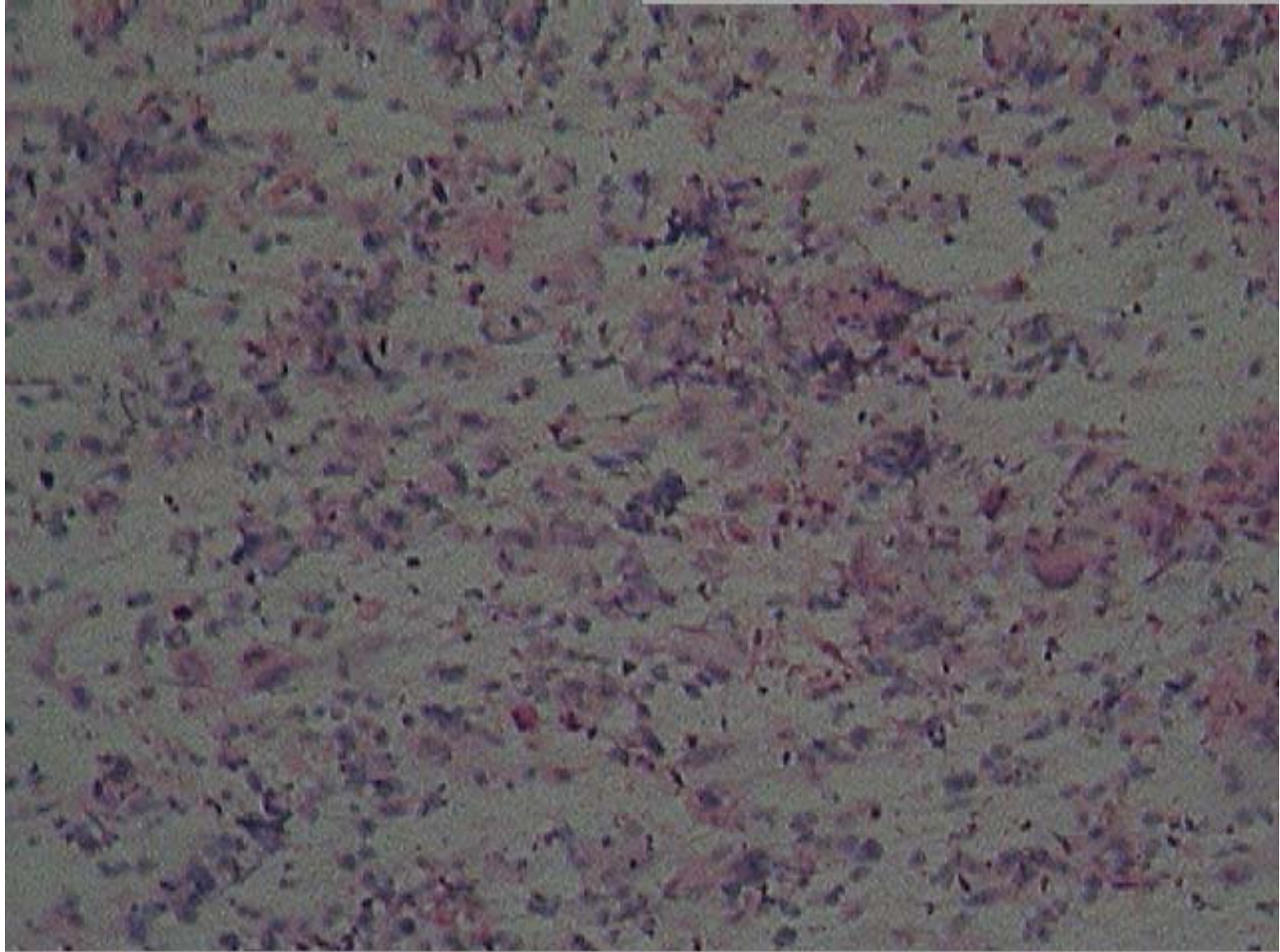


Squash Cytology

Picture 1: H&E 10x10



Picture 2: H&E 10x10



Case No. 2

Clinical History;

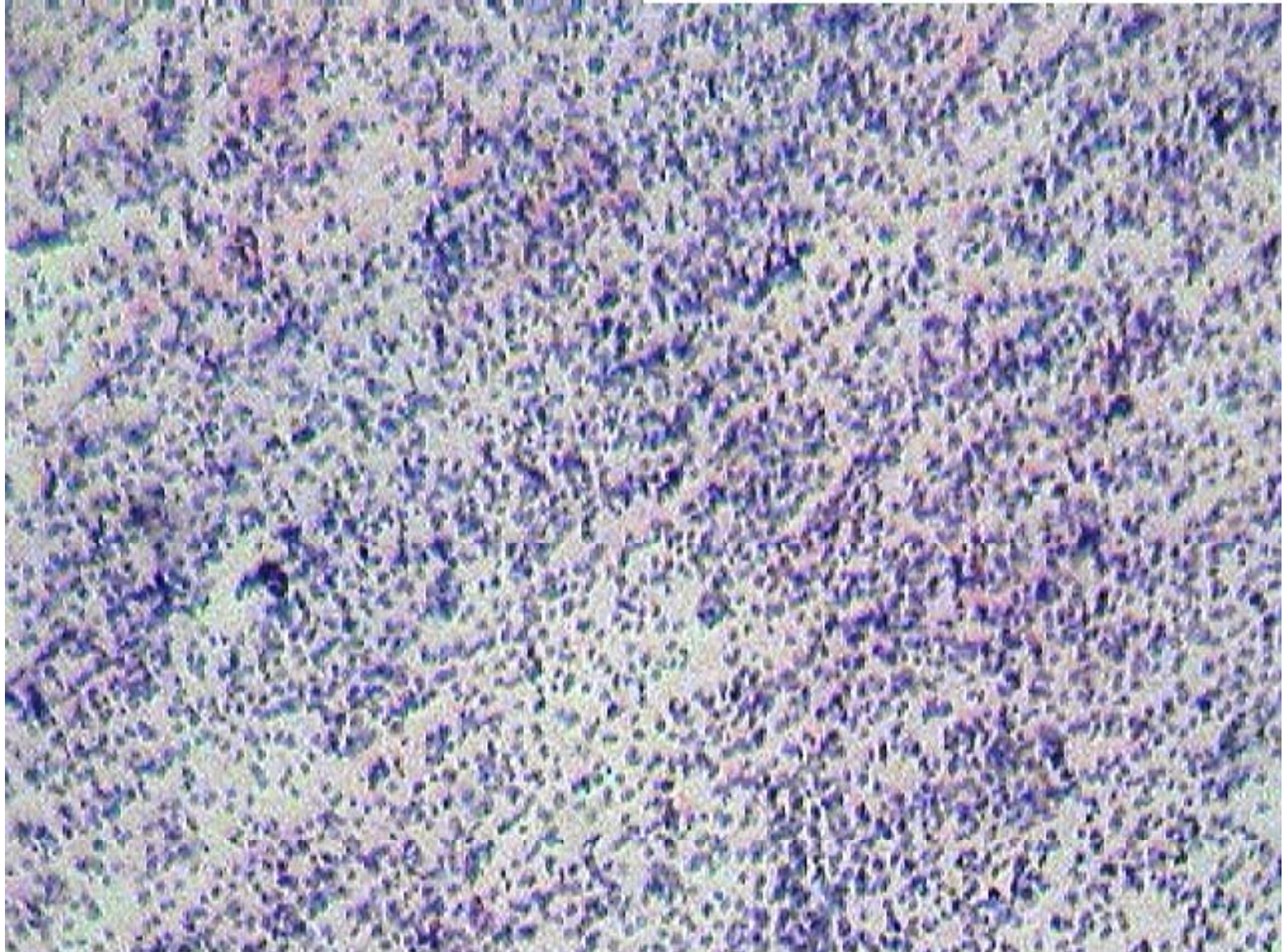
- A 16 years male
- Headache, vomitings - 1 month
- Fever - 10 days
- Deviation of angle of mouth to right side

Imageology

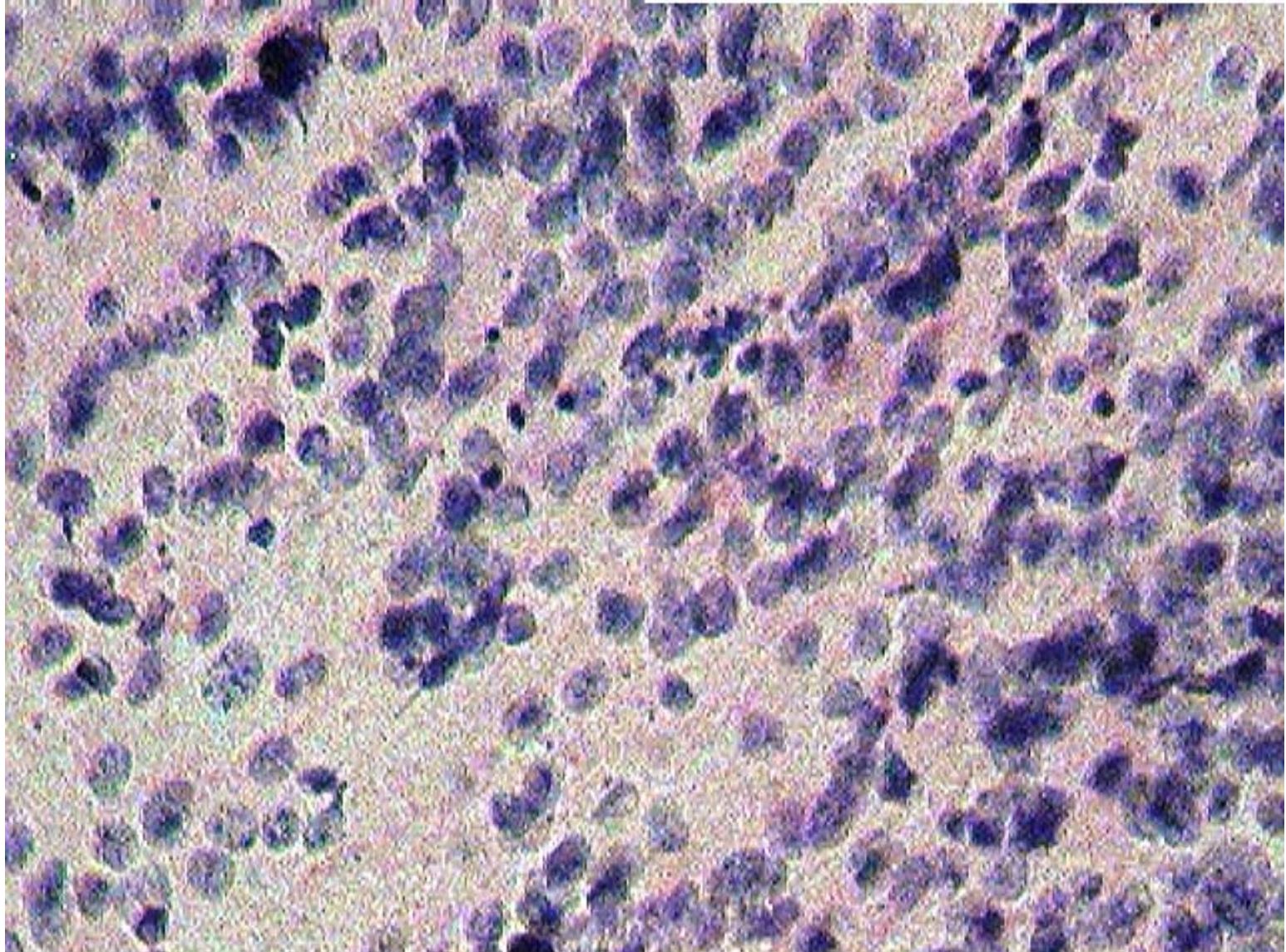


Squash Cytology

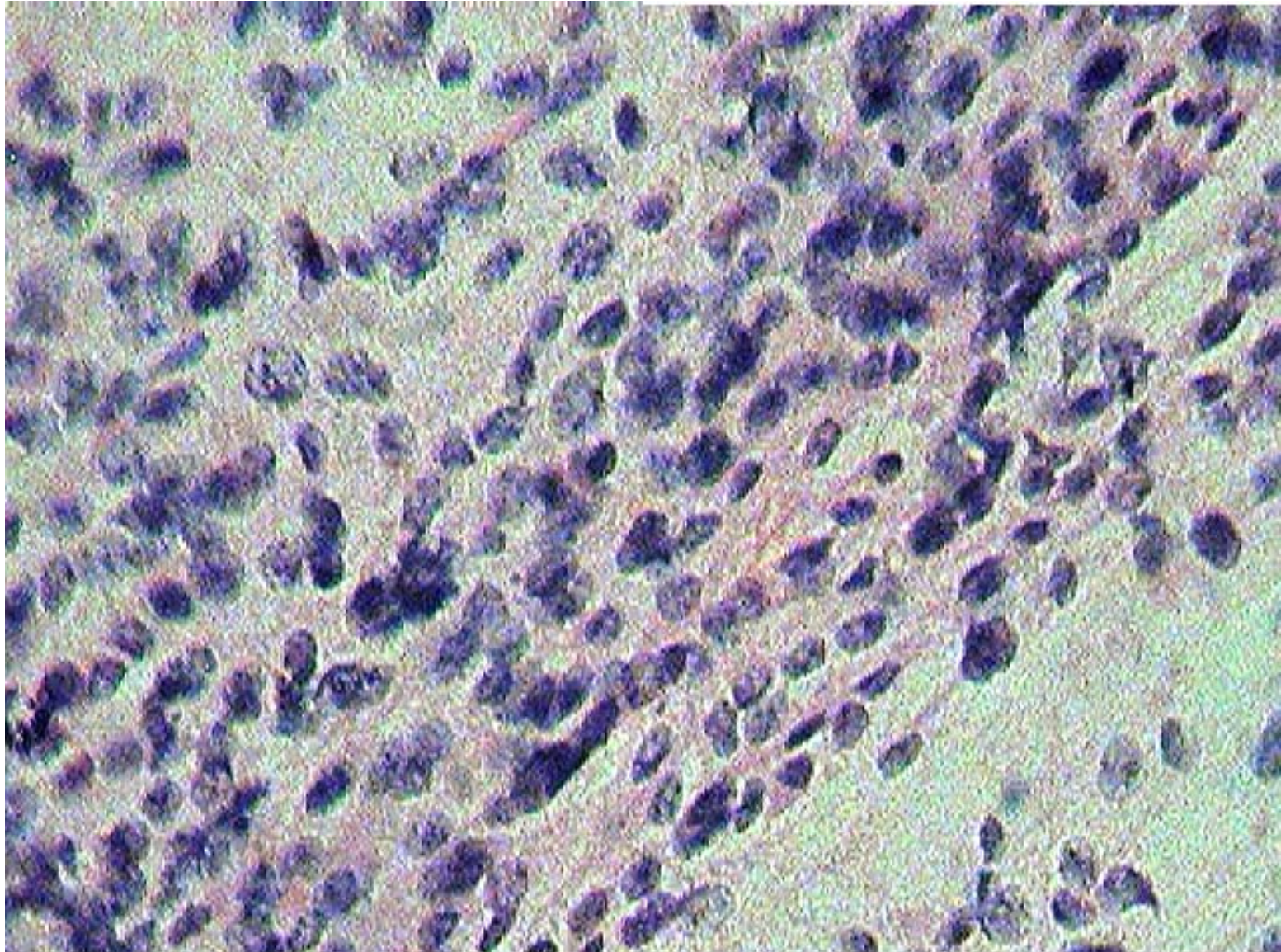
Picture 1: H&E 4x10



Picture 2: H&E 40x10



Picture 3: H&E 40x10





Thank you