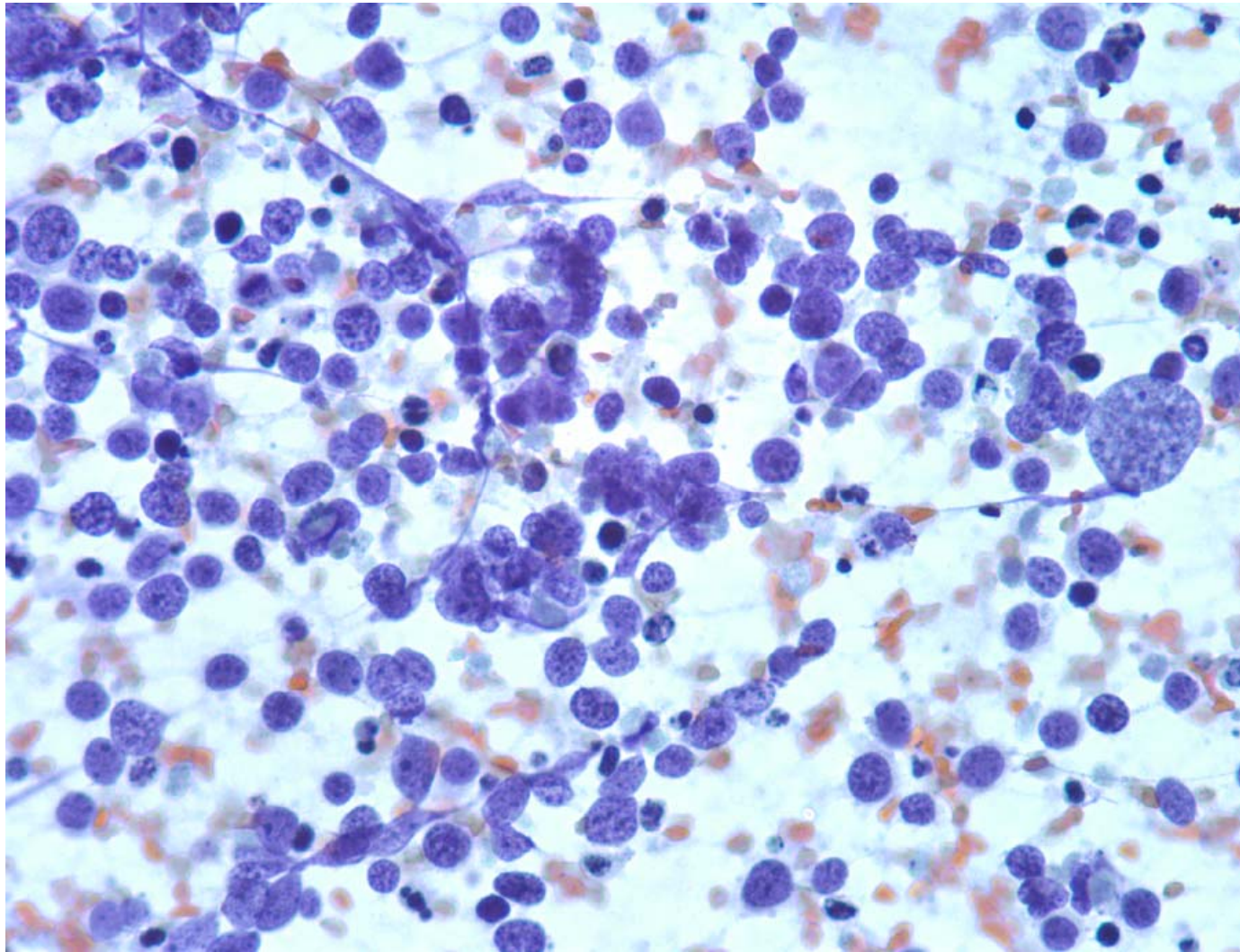


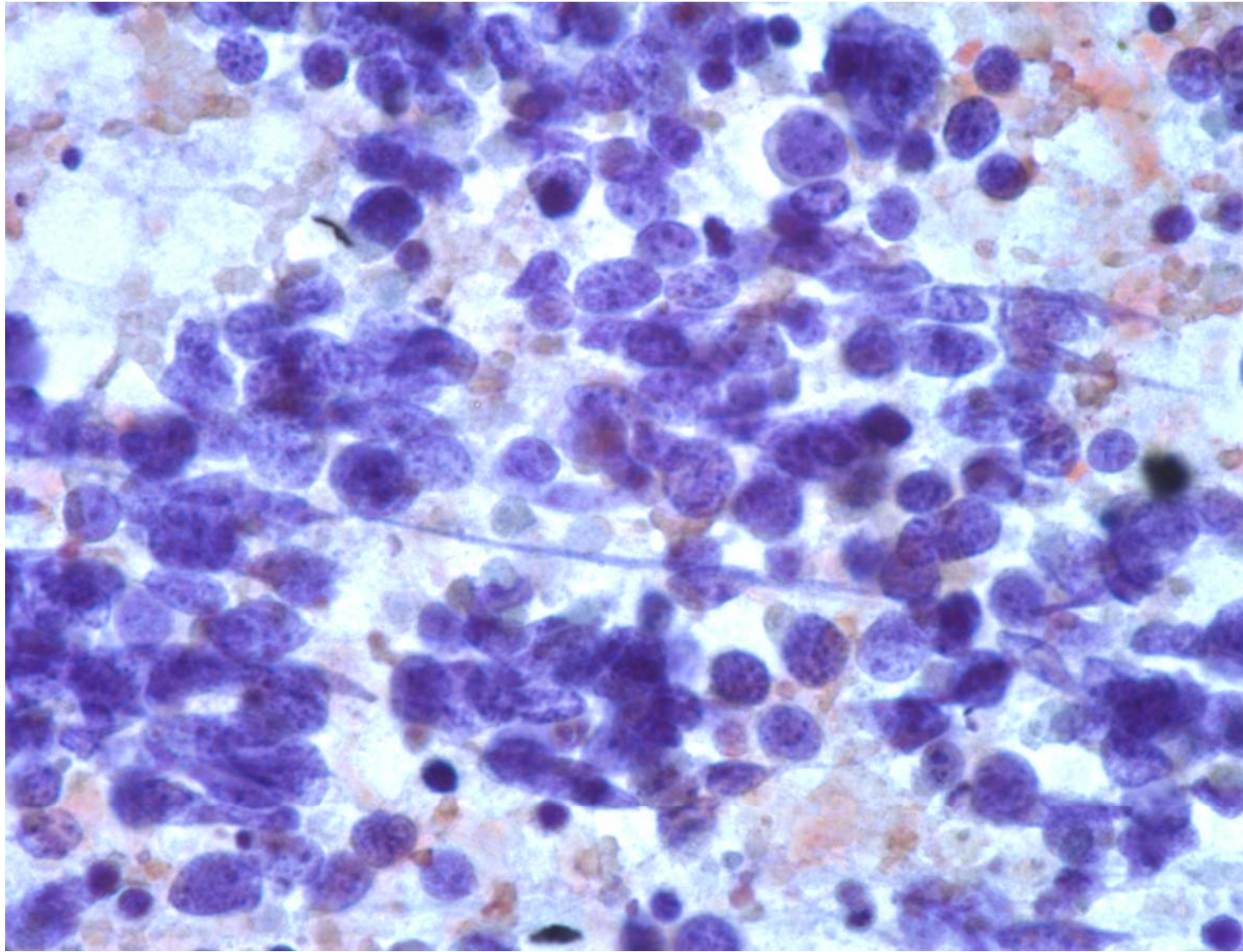
**Respiratory Cytology
Slide Seminar
37th European Congress of Cytology,
Cavtat-Dubrovnik
October 02, 2012**

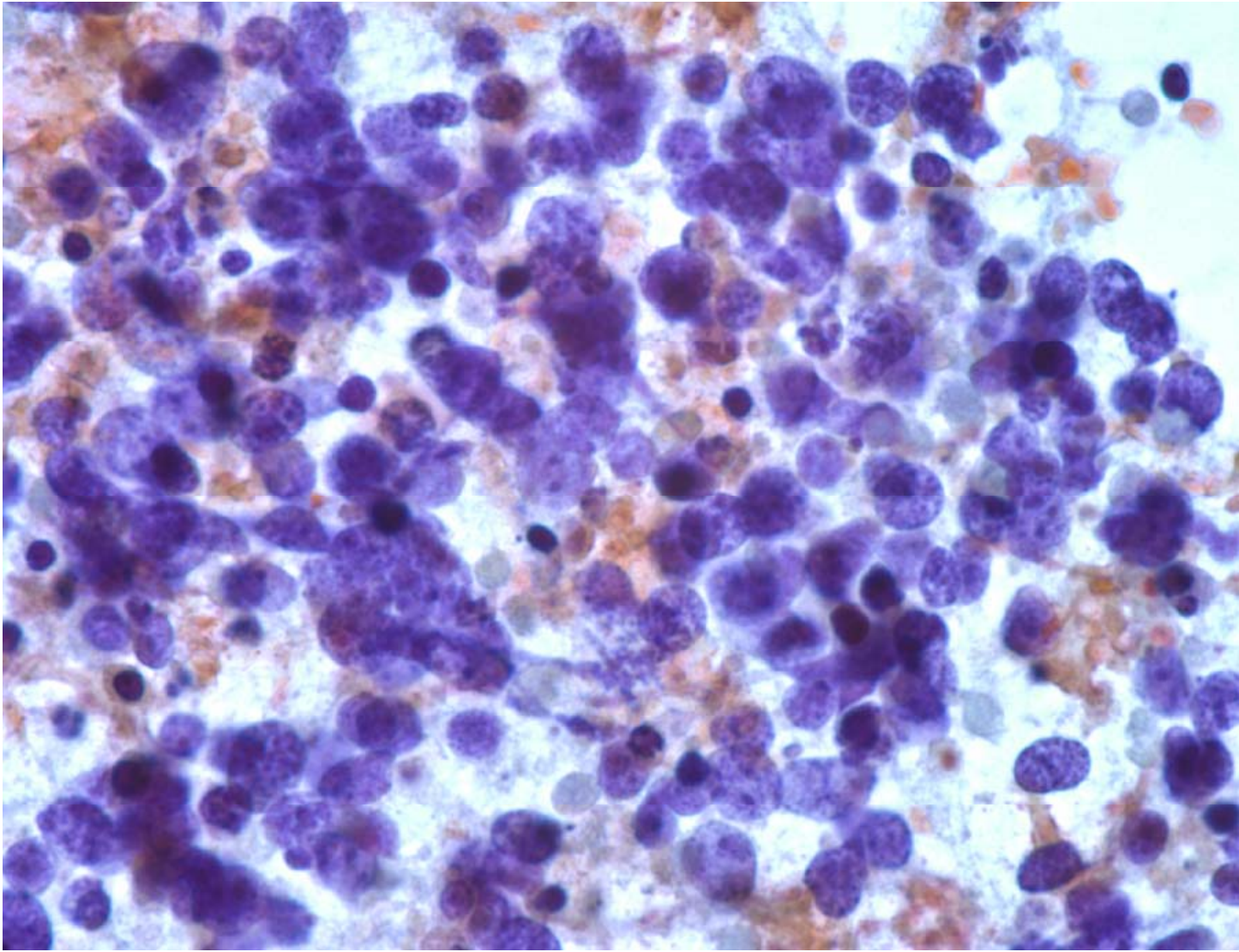
**Momin T. Siddiqui M.D.,FIAC.
Professor of Pathology
Emory University School of Medicine
Atlanta, GA
USA**

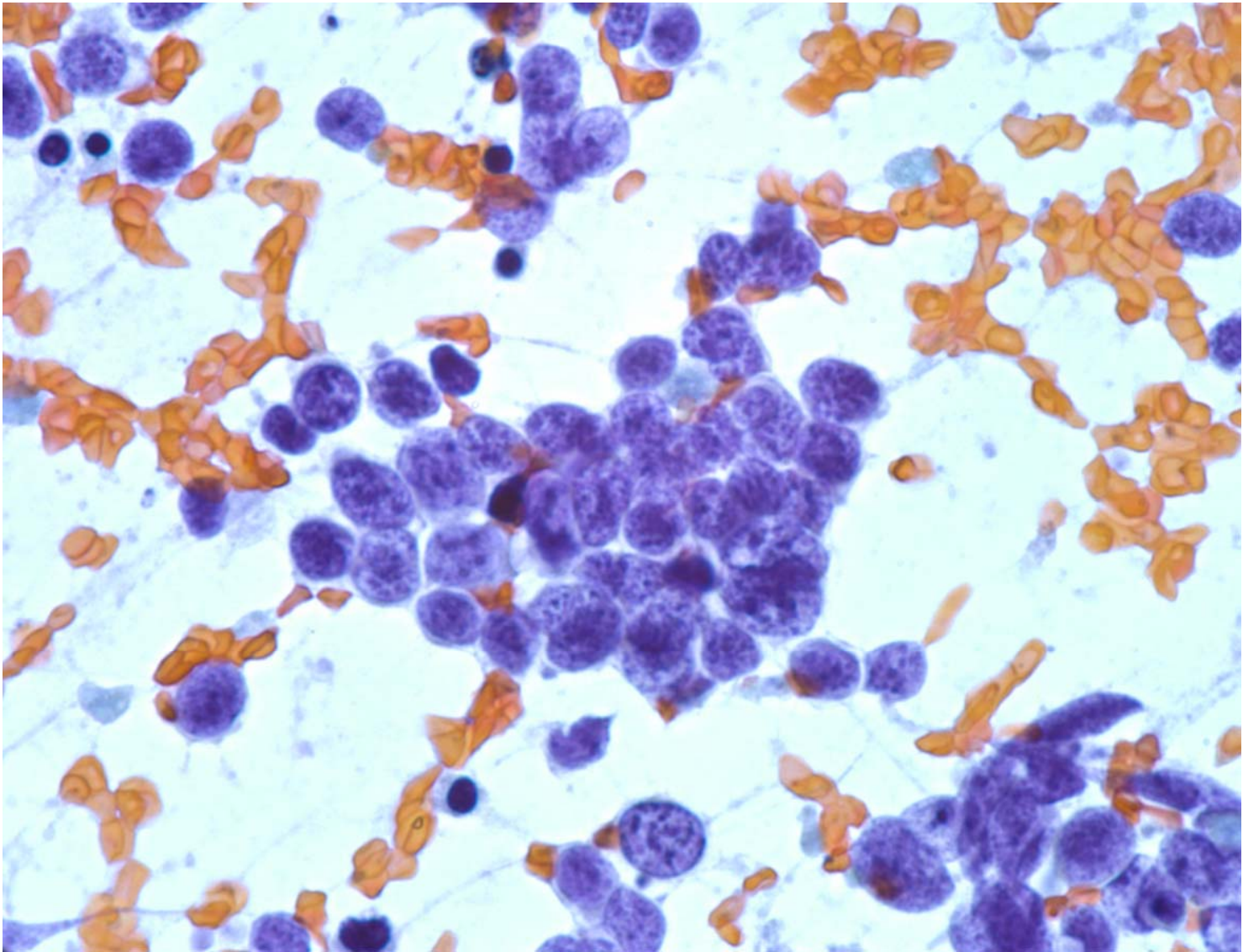
Case History

A 45 year old male with a history of smoking presented with a new onset of coughing with blood. Further work-up included a CT-scan of the chest which showed a central well demarcated 3.8 cm mass lacking calcification and necrosis. The patient underwent a CT-guided fine needle aspiration









Diagnosis

Large cell neuroendocrine carcinoma