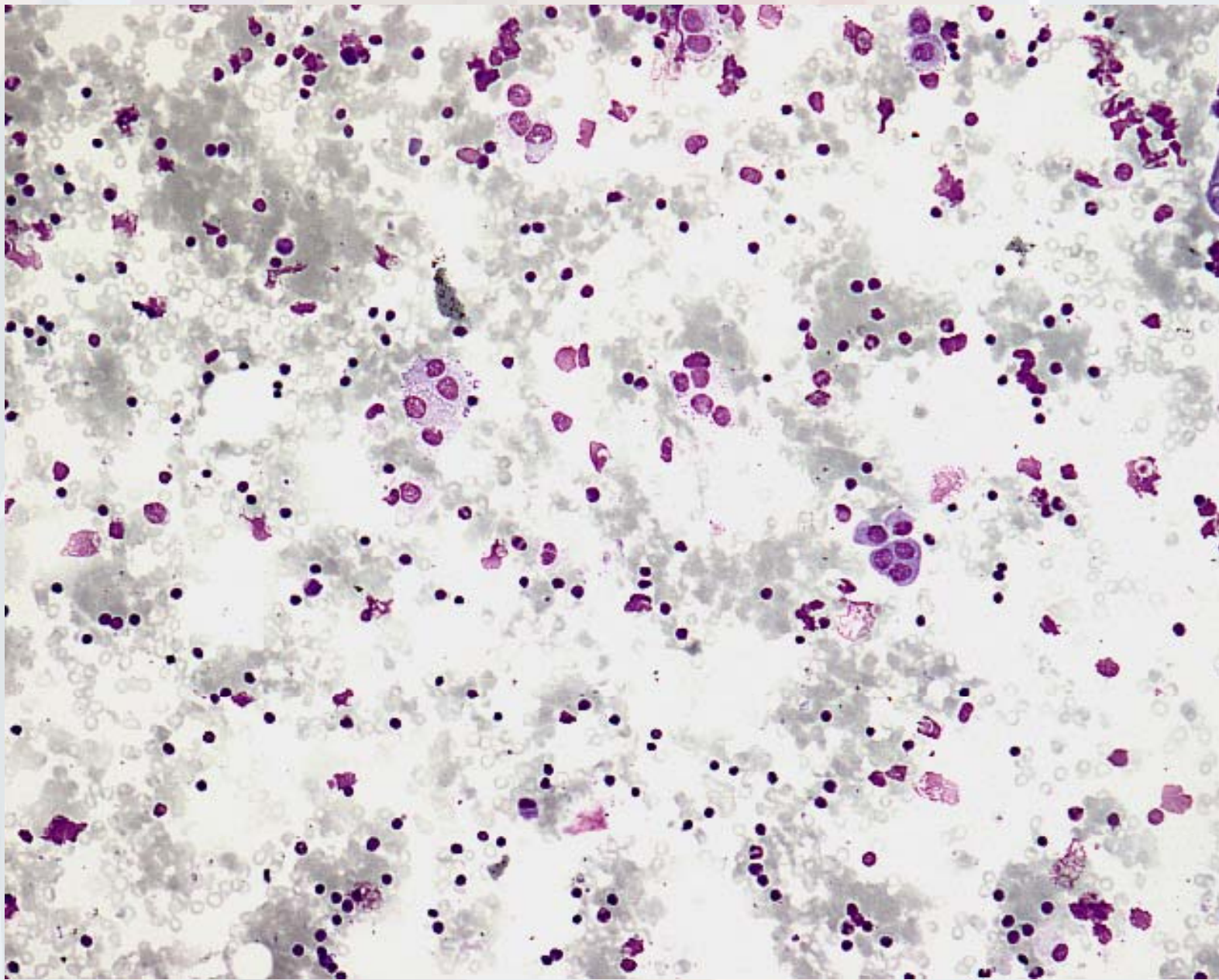


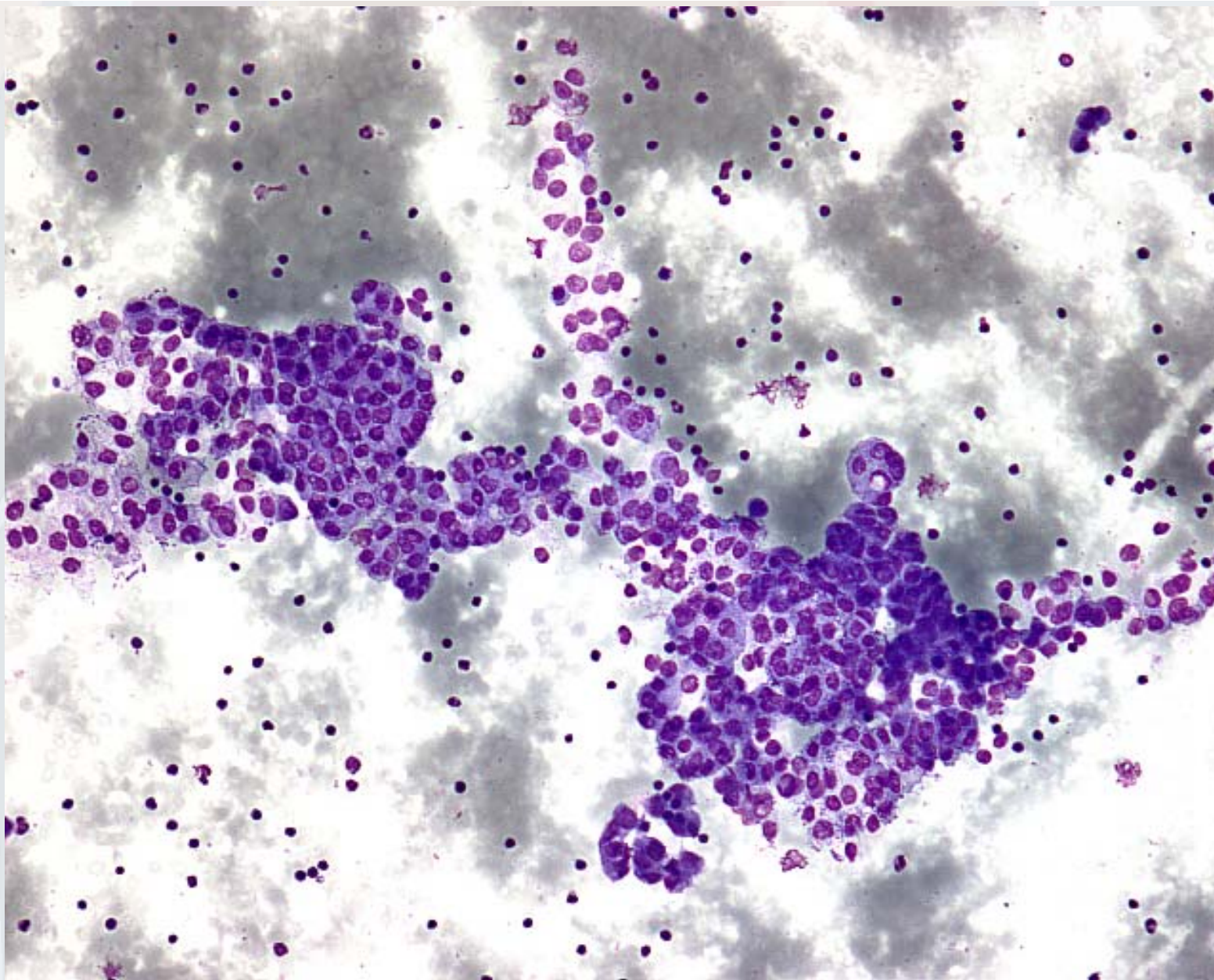
Case history

- A 32-year old woman
- Painful cervical mass, supraclavicular
- 14 days after in vitro fertilization
- US: enlarged lymphnode: 3.5x1.5x1cm (reactive)
- FNA was performed
- Smears and cytopspines were prepared

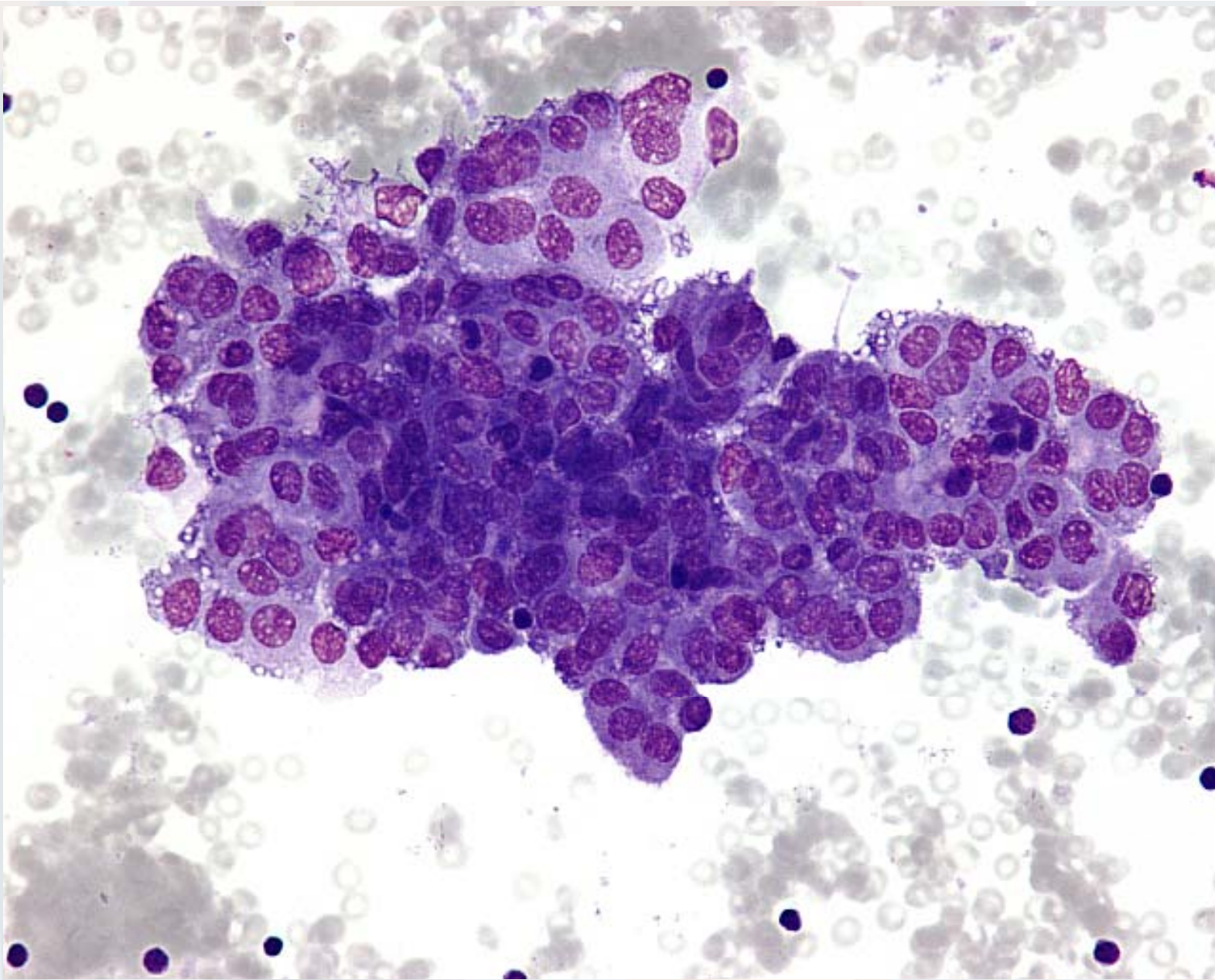




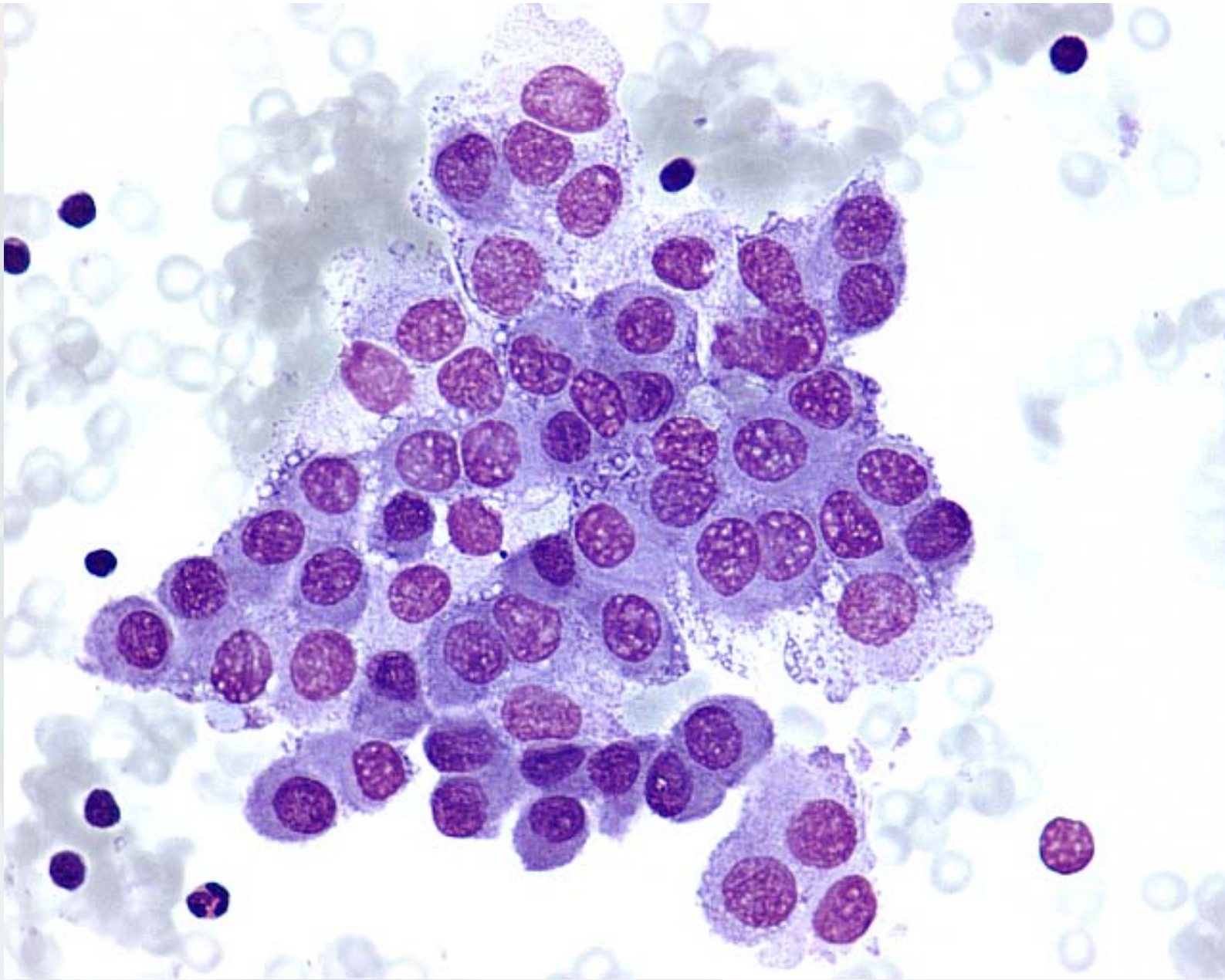
Giemsa, 10x



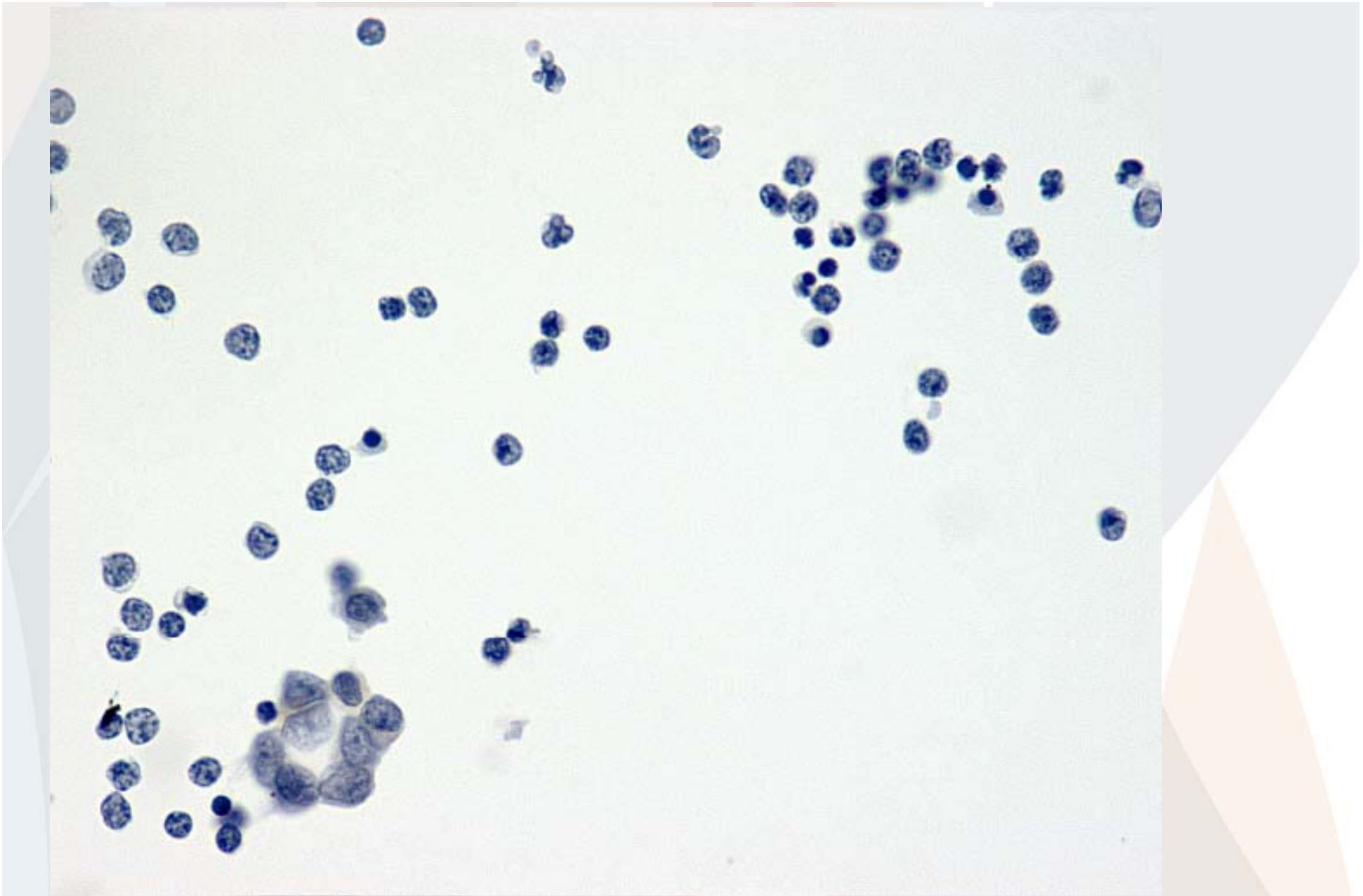
Giemsa 20x



Giemsa 40x



Giemsa, 60x



Papanicolaou 60x