



Slide Seminar 2

GYNECOLOGICAL CYTOLOGY

Dr Minaxi Desai, CBE, FRCPath,
Clinical Head
Manchester Cytology Centre,
Director
Northwest Cytology Training Centre,
Manchester Royal Infirmary,
Manchester, M13 9WW
UK
1st October 2012





Case 1



Age 20 F

Routine call for first smear

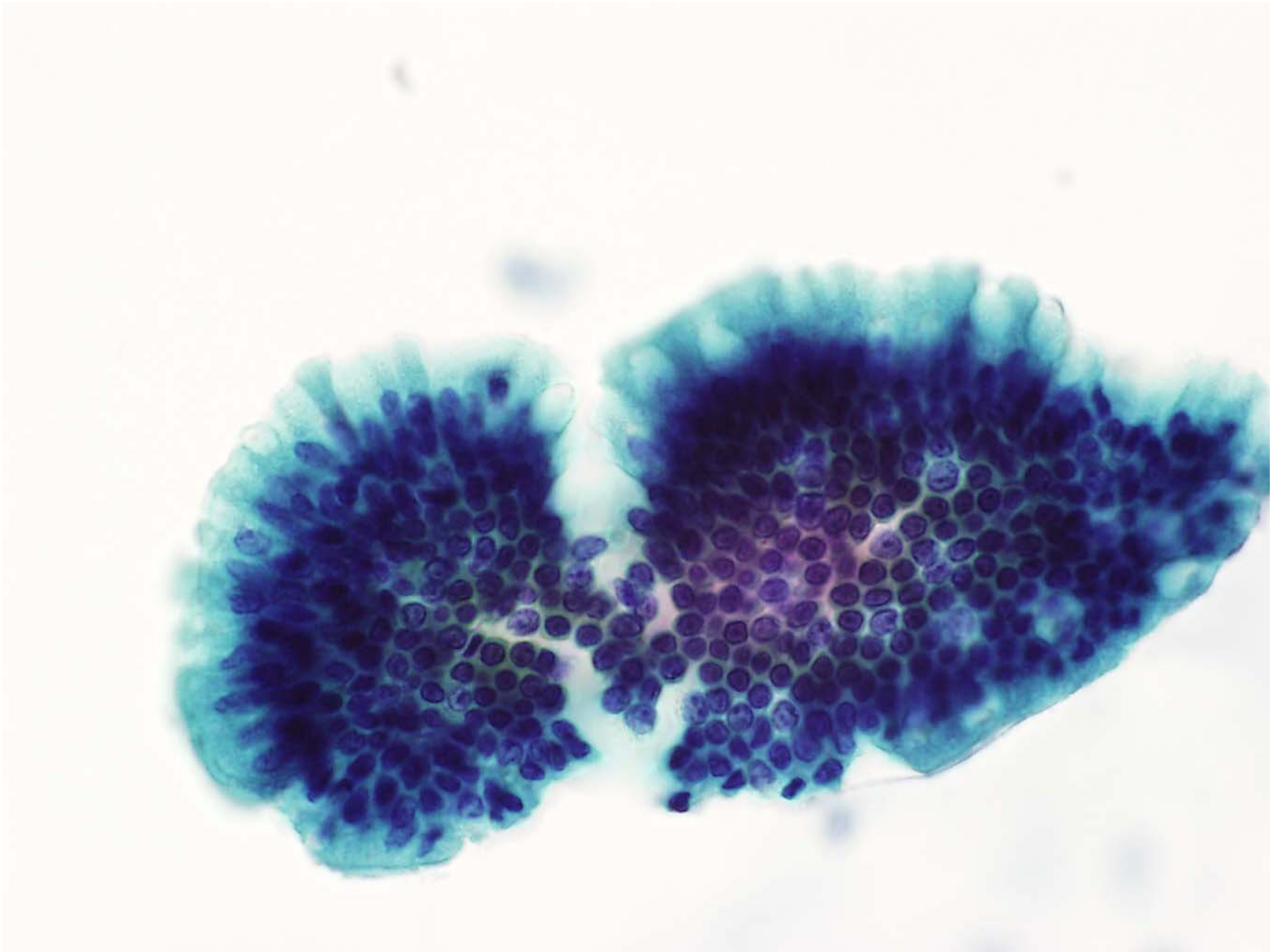
L.M.P. Day 19

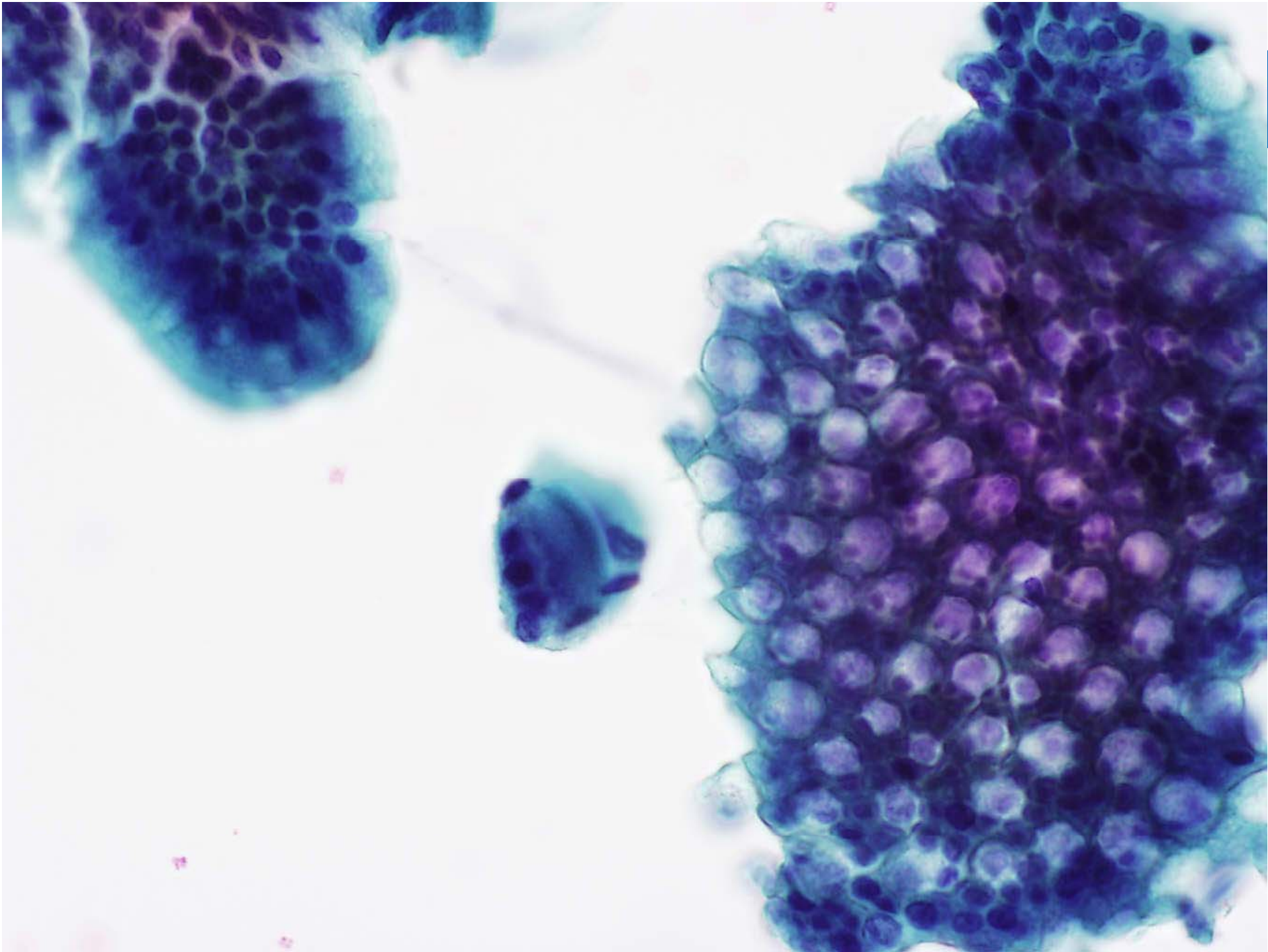
2 cervixes and absence of vagina

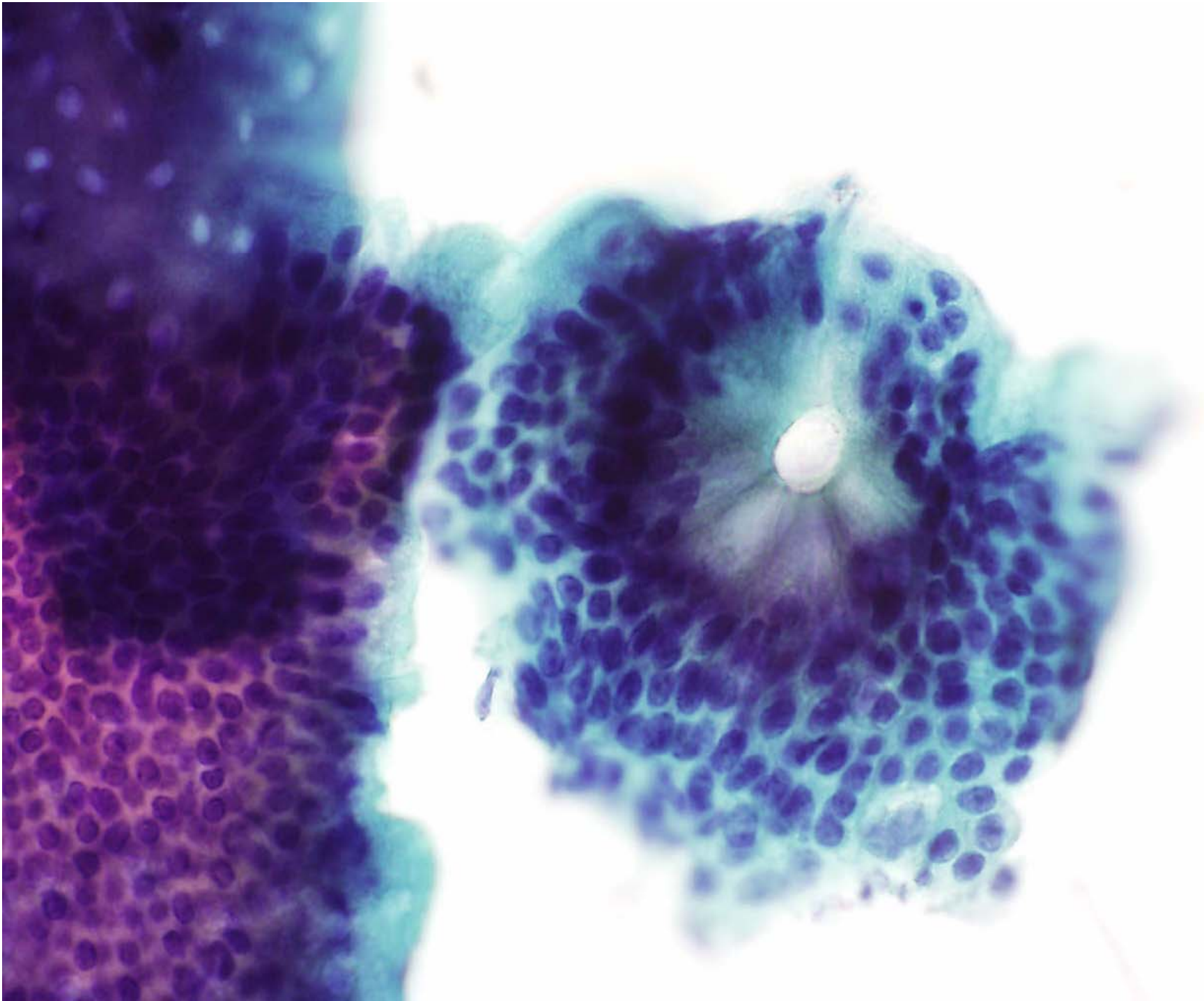
Neo-vagina constructed at the age of 18

Neo vagina too long to visualise the cervixes.

SurePath LBC sample received





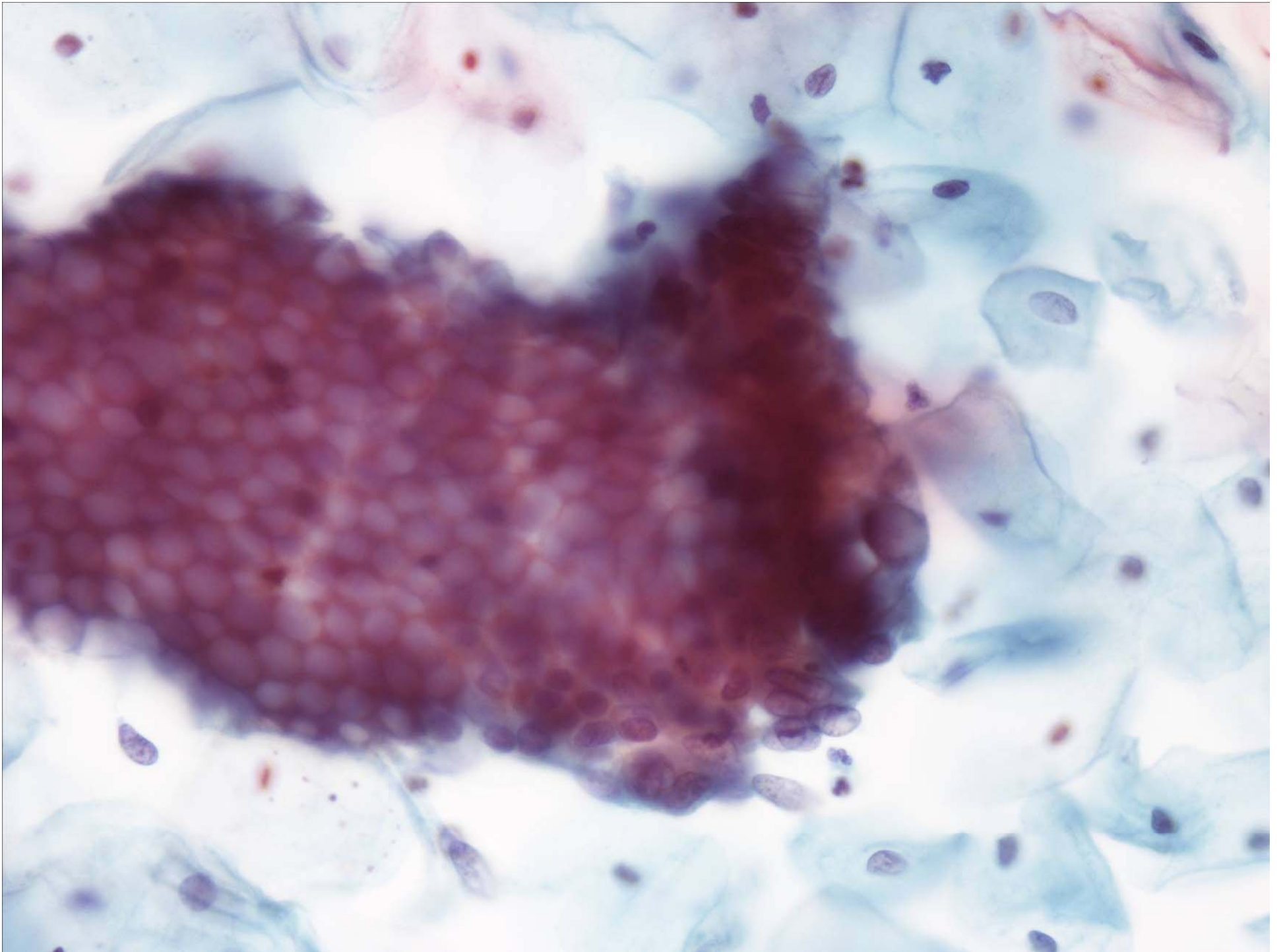


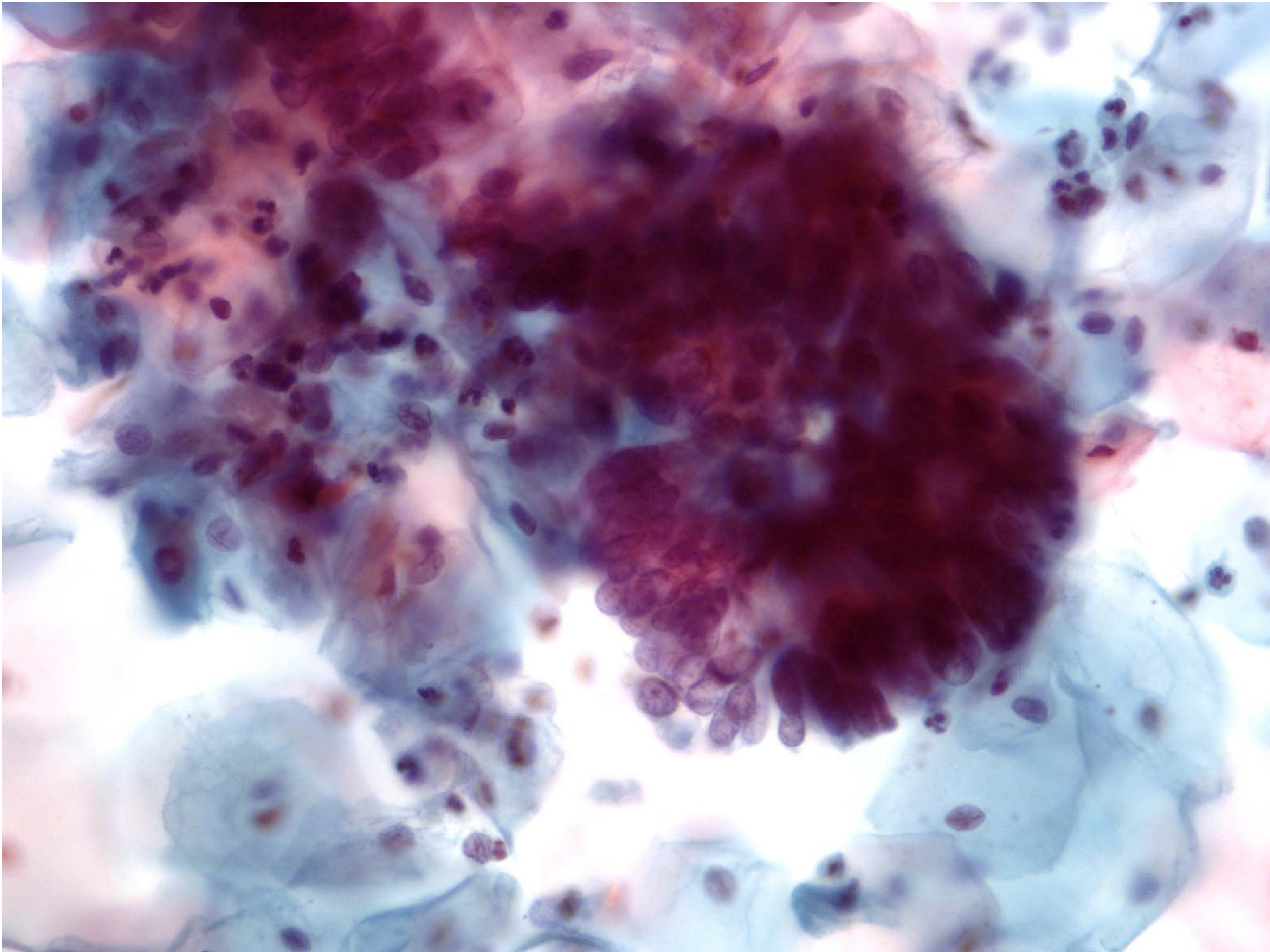


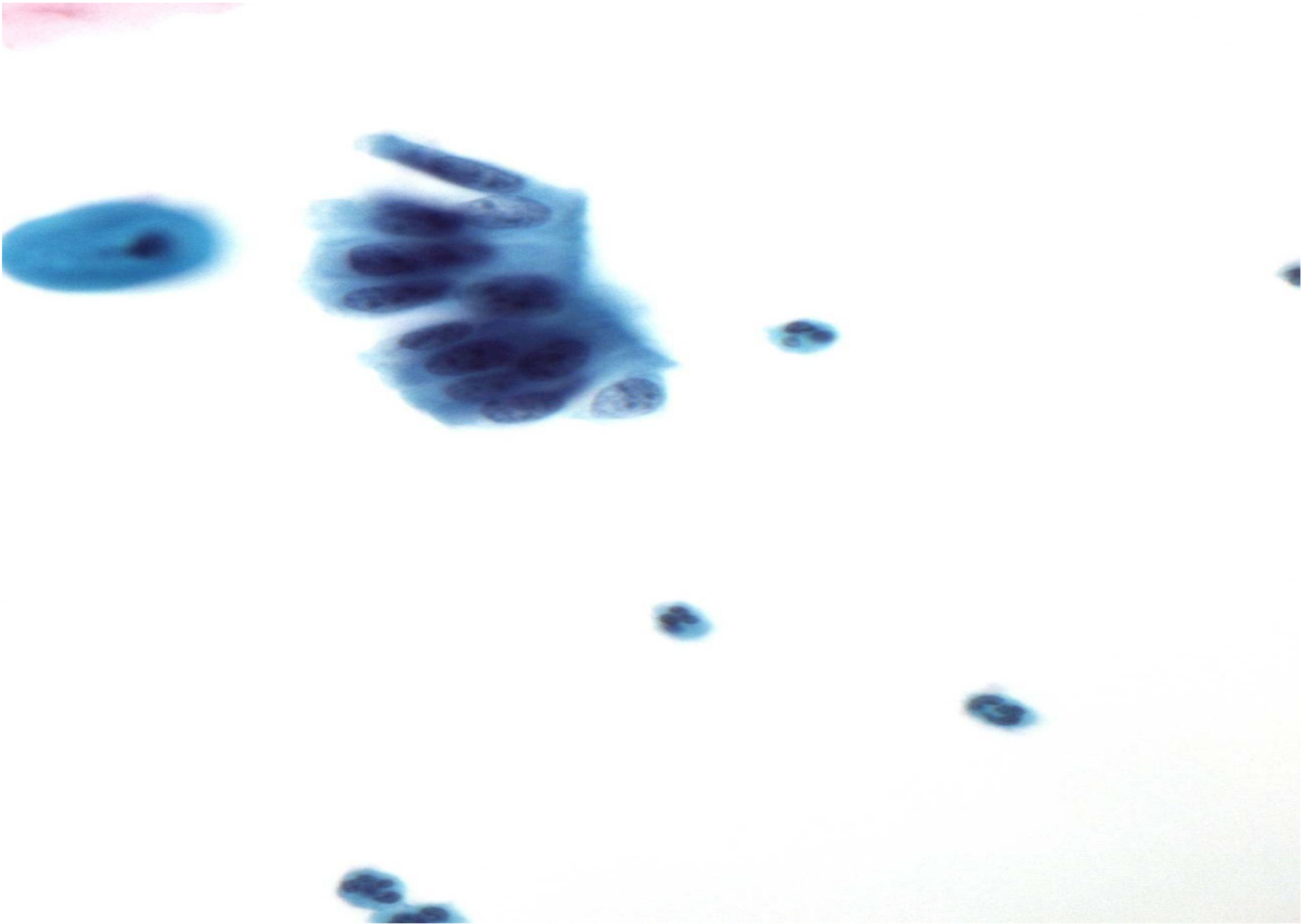
Case 2

- 26 year old female.
- Negative smear histories in the past
- Asymptomatic
- Routine recall for cervical smear
- LMP 13 days
- SurePathLBC sample recieved







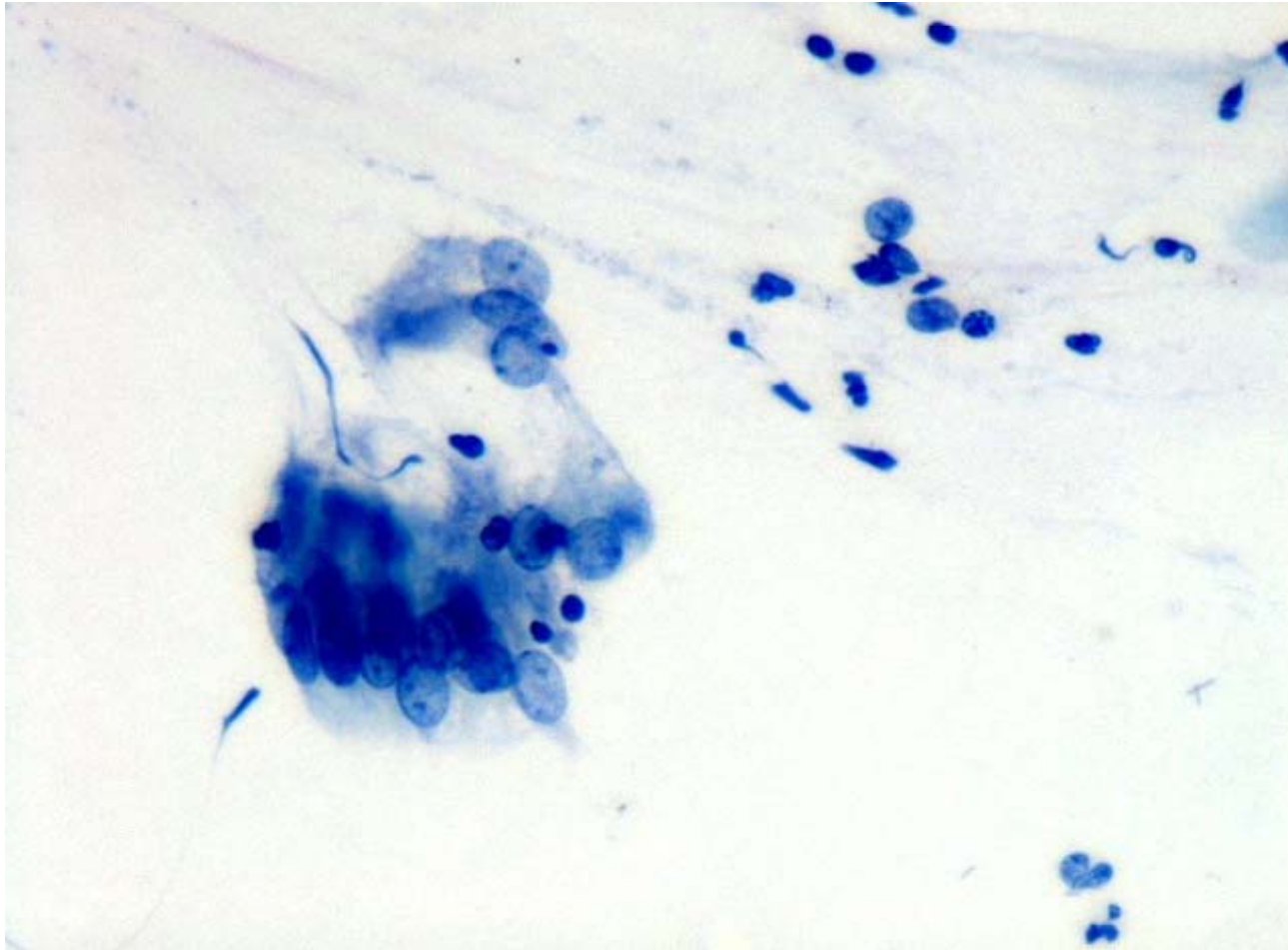




Case 3

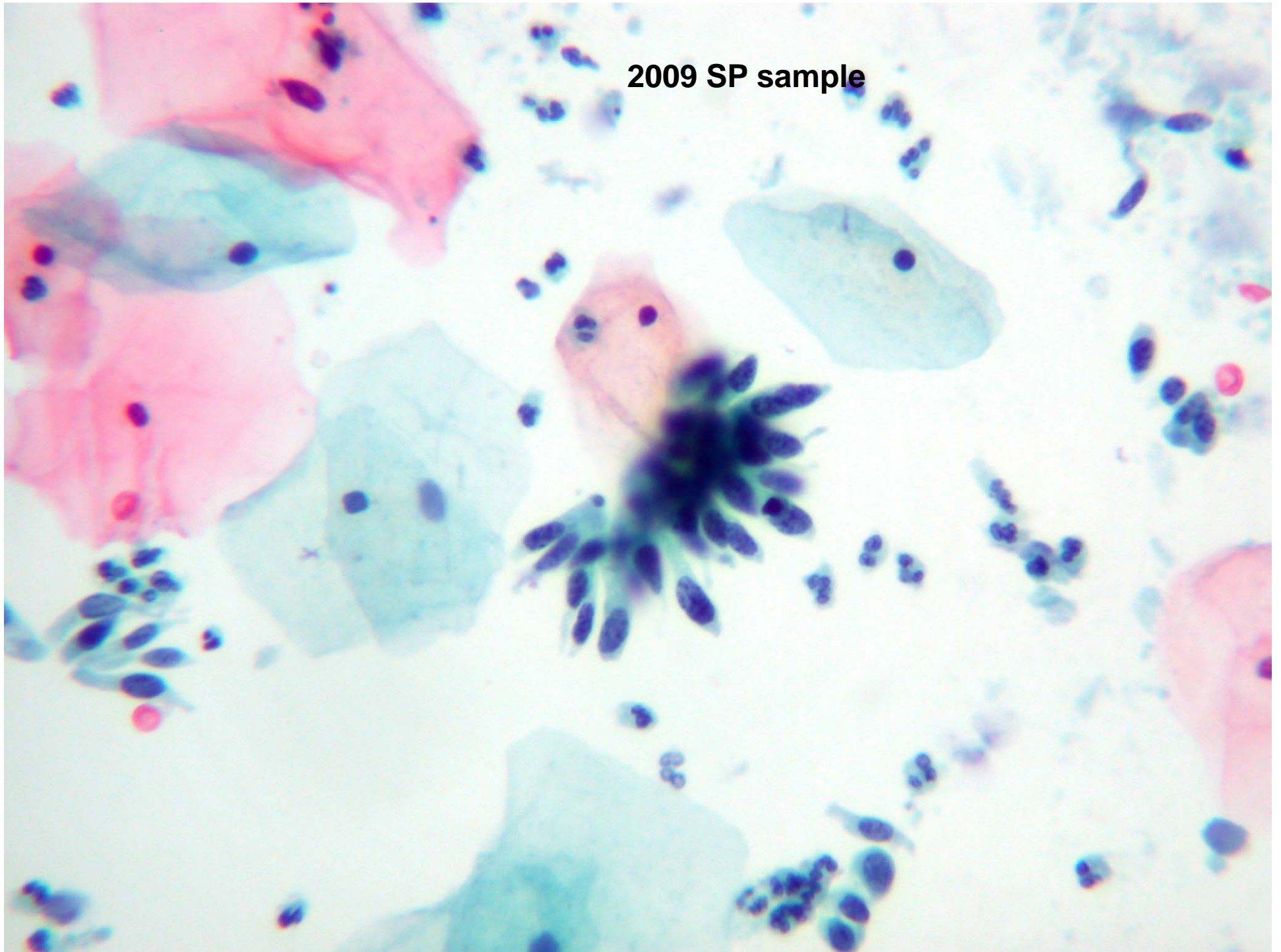
- 39F
- Mother “died uterine ca age 35”
- Peutz Jeghers syndrome in family
- Chronic fatigue syndrome
- AND
- H/O Vertigo, Diabetes, Asthma, Epilepsy
- Under care of gynaecologist due to excessive discharge and vulvitis
- Polycystic ovarian syndrome - given dianette then metformil
- Cervix looked normal except erosion
- 13 conventional cervical samples between 1989 and 2007-all reported as negative
- Repeated cryotherapy for erosion
- Excessive mucinous discharge continued
- Further cytology samples sent by Gynaecologists: in 2008 conventional and in 2009 SP sample. Both reported as negative
- Decided to do cone biopsy
- Patient requested hysterectomy due to menorrhagia

2008 conventional smear



Directorate of Laboratory Medicine

2009 SP sample



2009 SP sample



A microscopic image showing a large, irregularly shaped cluster of cells stained in a vibrant blue color. This central cluster is surrounded by numerous smaller, individual cells, many of which are stained in a bright red or pink color. The background is a light, off-white color, typical of a microscope slide. The overall appearance is that of a histological or cytological specimen.

Have Fun

**My special thanks to
Ms. Viv Beavers
Mrs. Jenny Davies and
Dr. Chris Waddell
For providing cases and images**