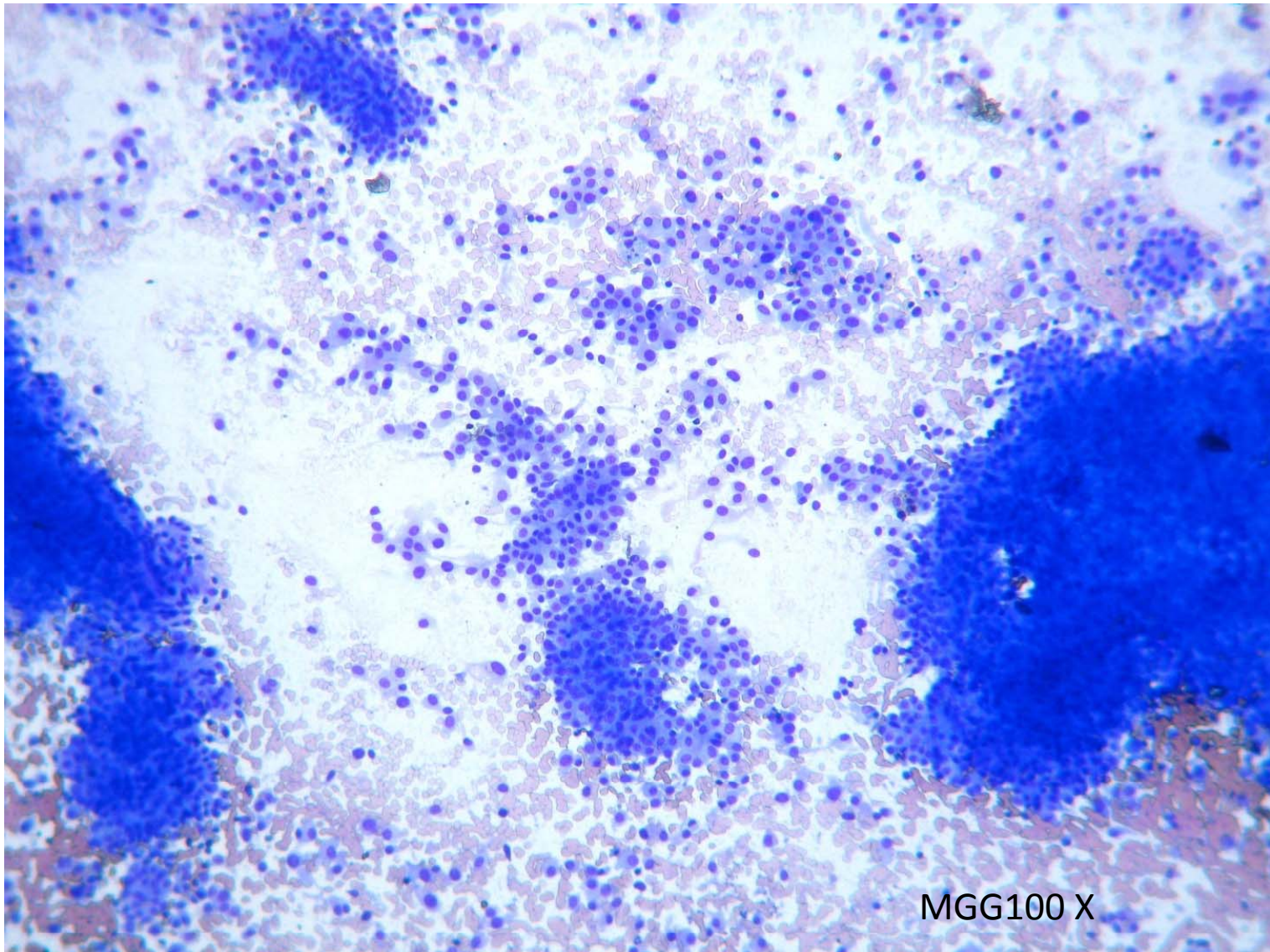


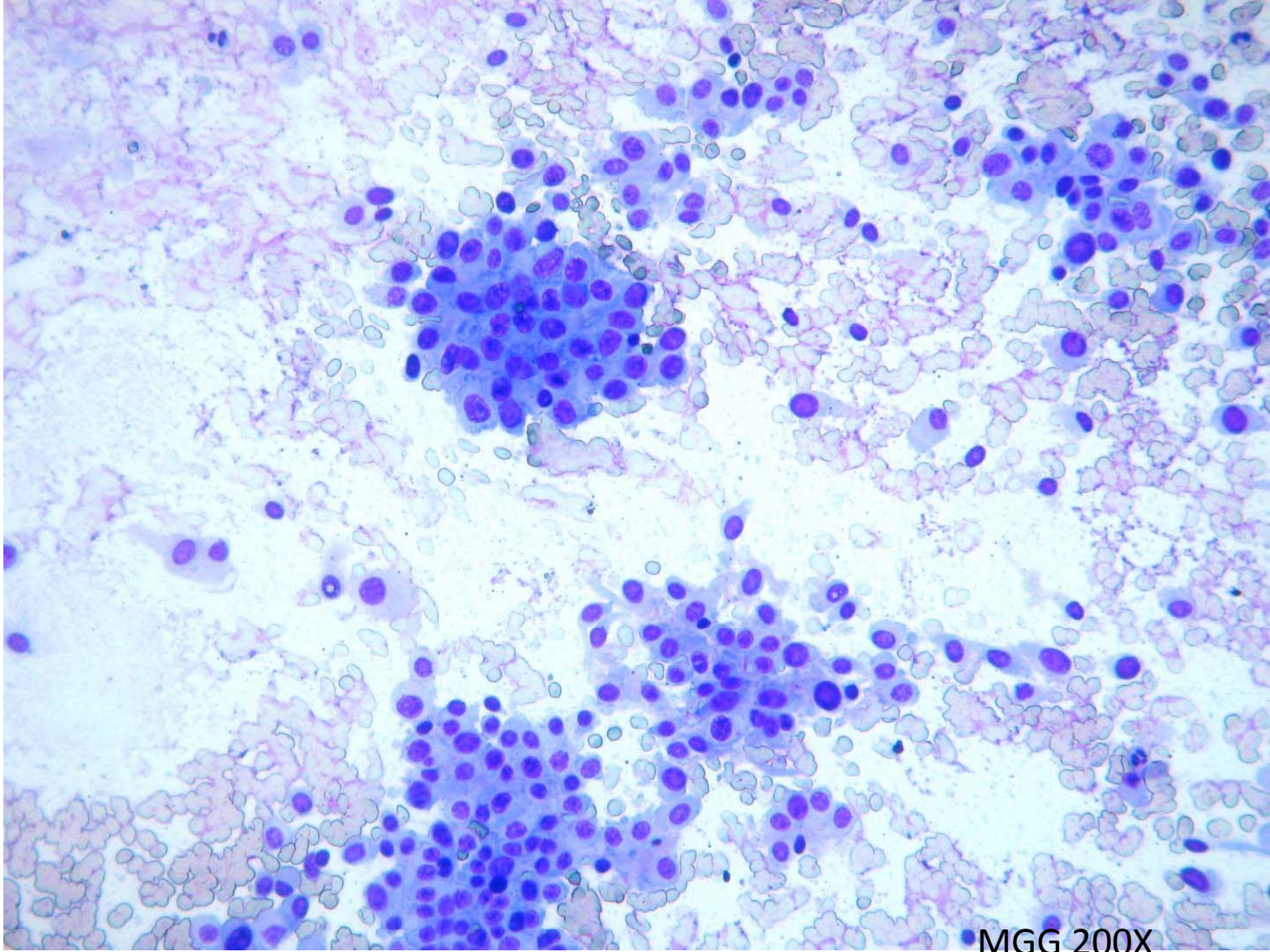
# CASE 1

- **76-old woman** with abdominal pain and loss of appetite during last 5 months.
- **Medical history:** Cholecystectomy (18 years ago) ; Hysterectomy (28 years ago), arterial hypertension
- **Blood tests** :normocytic and hypochromic anaemia, slightly elevated CRP
- **Abdominal CT and MSCT:** tumor located in the upper abdomen (gastric tumor?); multiple vascularized (probably metastatic) lesions in liver
- **Esophagoduodenoscopy:**
  - Gastric ulcer (1,5 cm in diameter) found in pyloric channel
  - Extramural compression of gastric mucosa in projection of anterior corporal wall and small curvature was also noticed

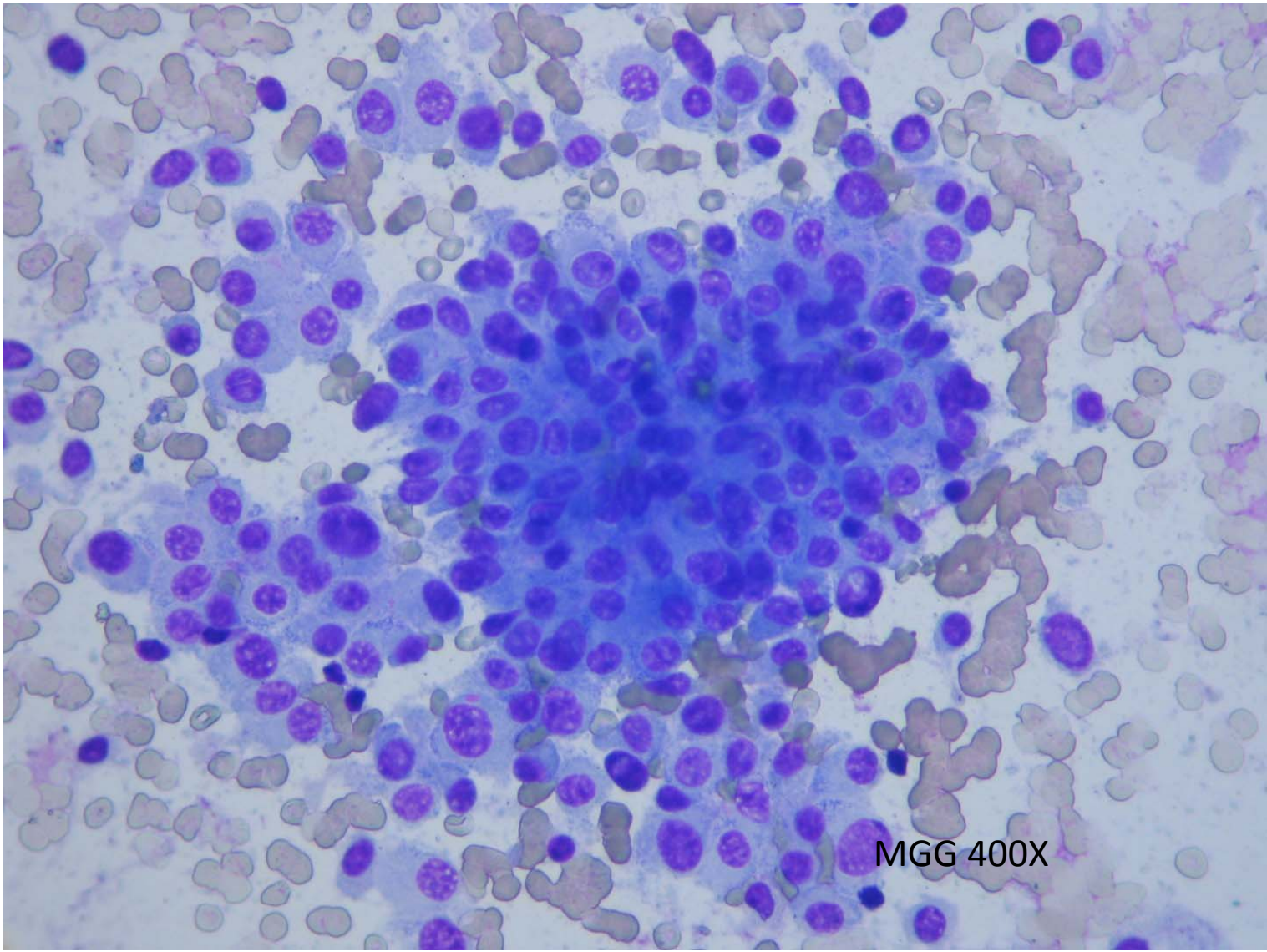
- **Endoscopic biopsy of ulcer:** PHD: chronic active gastritis
- **Abdominal US :** enlarged liver, with multiple inhomogenous structures consisting of infiltrative and necrotic areas.
- **US guided FNA of liver lesion:**
- Cellular smears with clusters and numerous single, medium to large sized tumor cells
- Cells showed anisocytosis, anisonucleosis, eccentric round to ovoid nuclei, granular and irregular chromatin, abundant, partially elongated and relatively sharply demarcated cytoplasm, occasional intranuclear inclusions
- Mitoses and stromal fragments were seen
- Amorphous eosinophilic extracellular material and peripheral blood in background



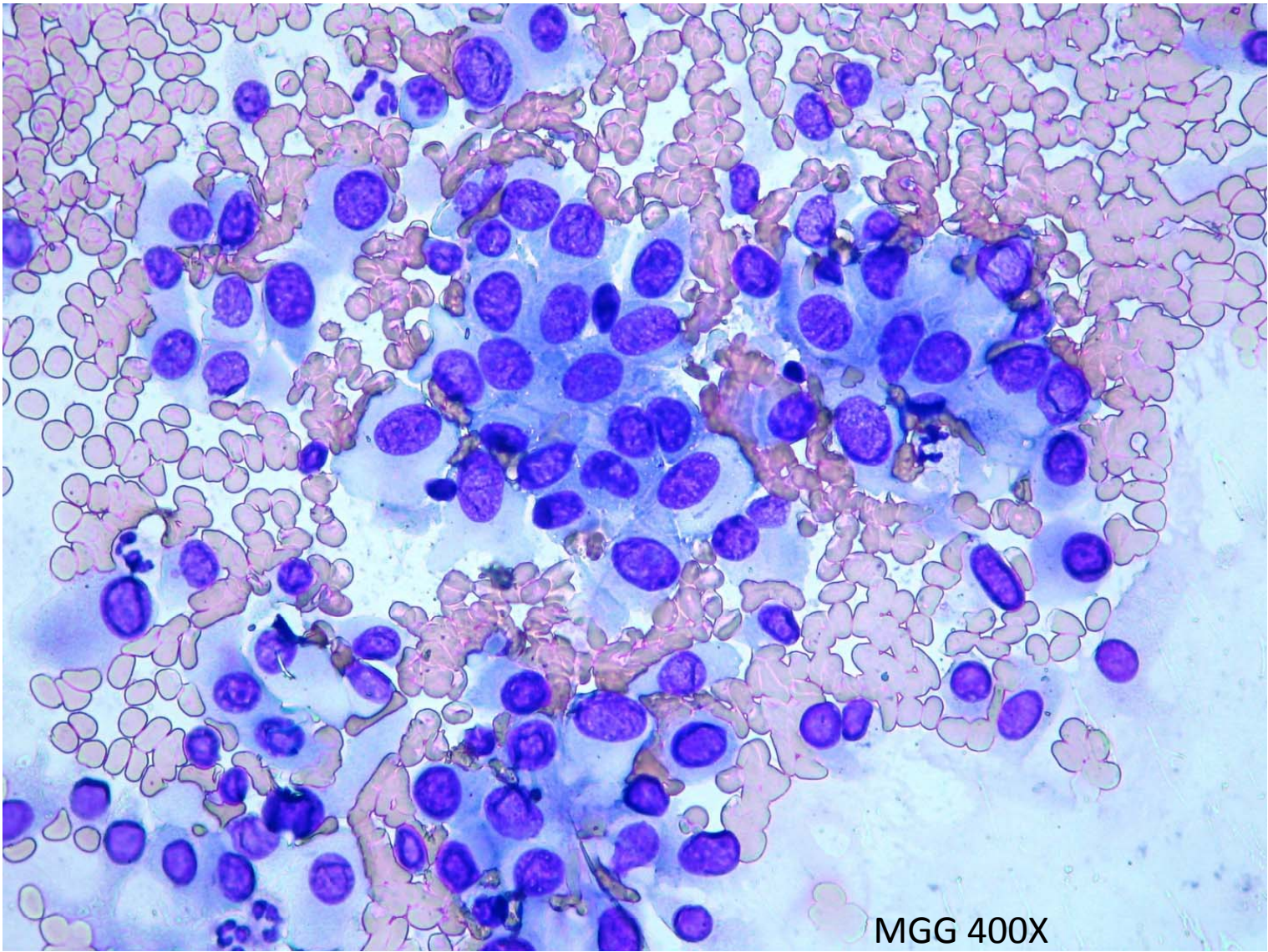
MGG100 X



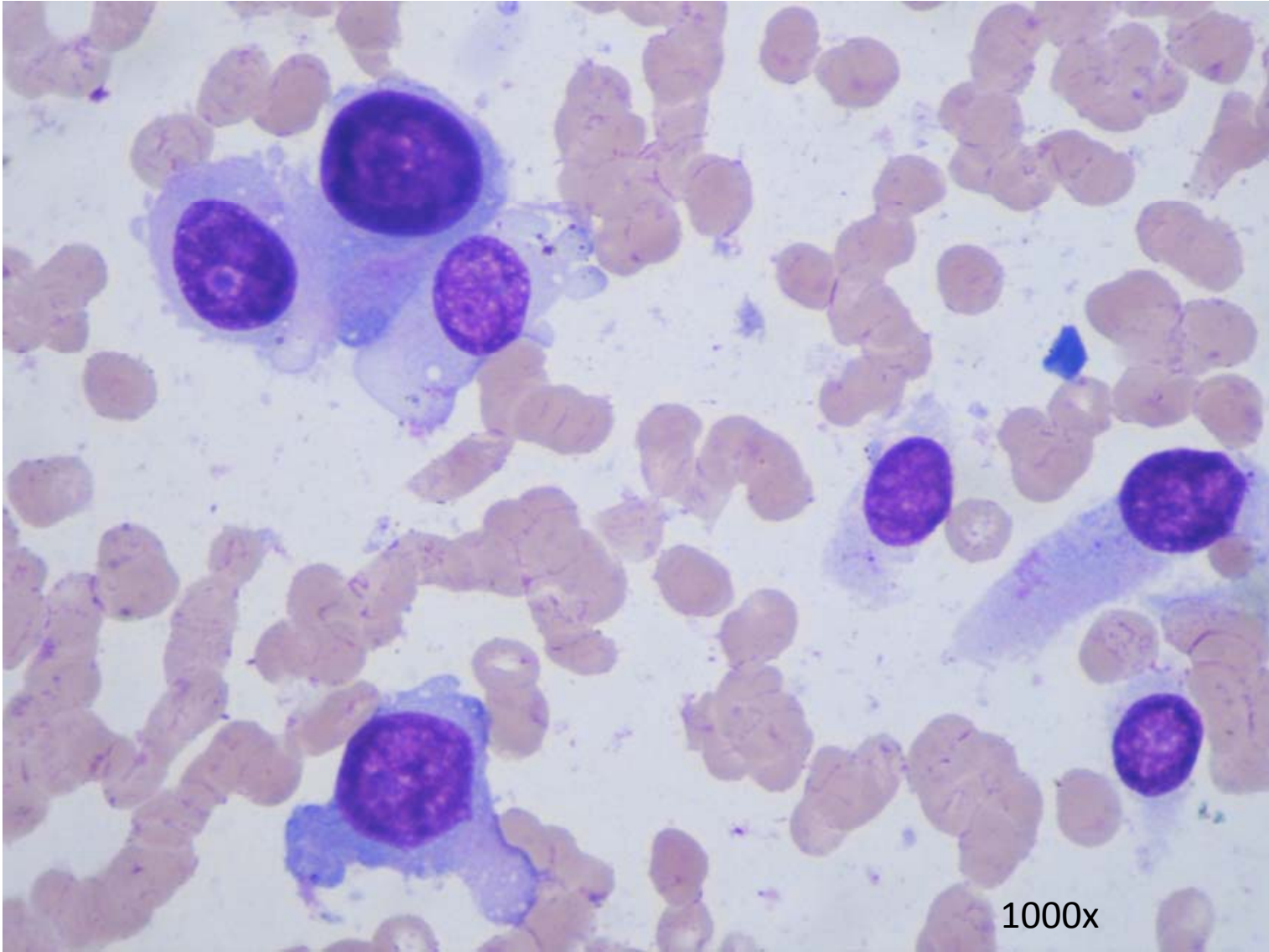
MGG 200X



MGG 400X



MGG 400X

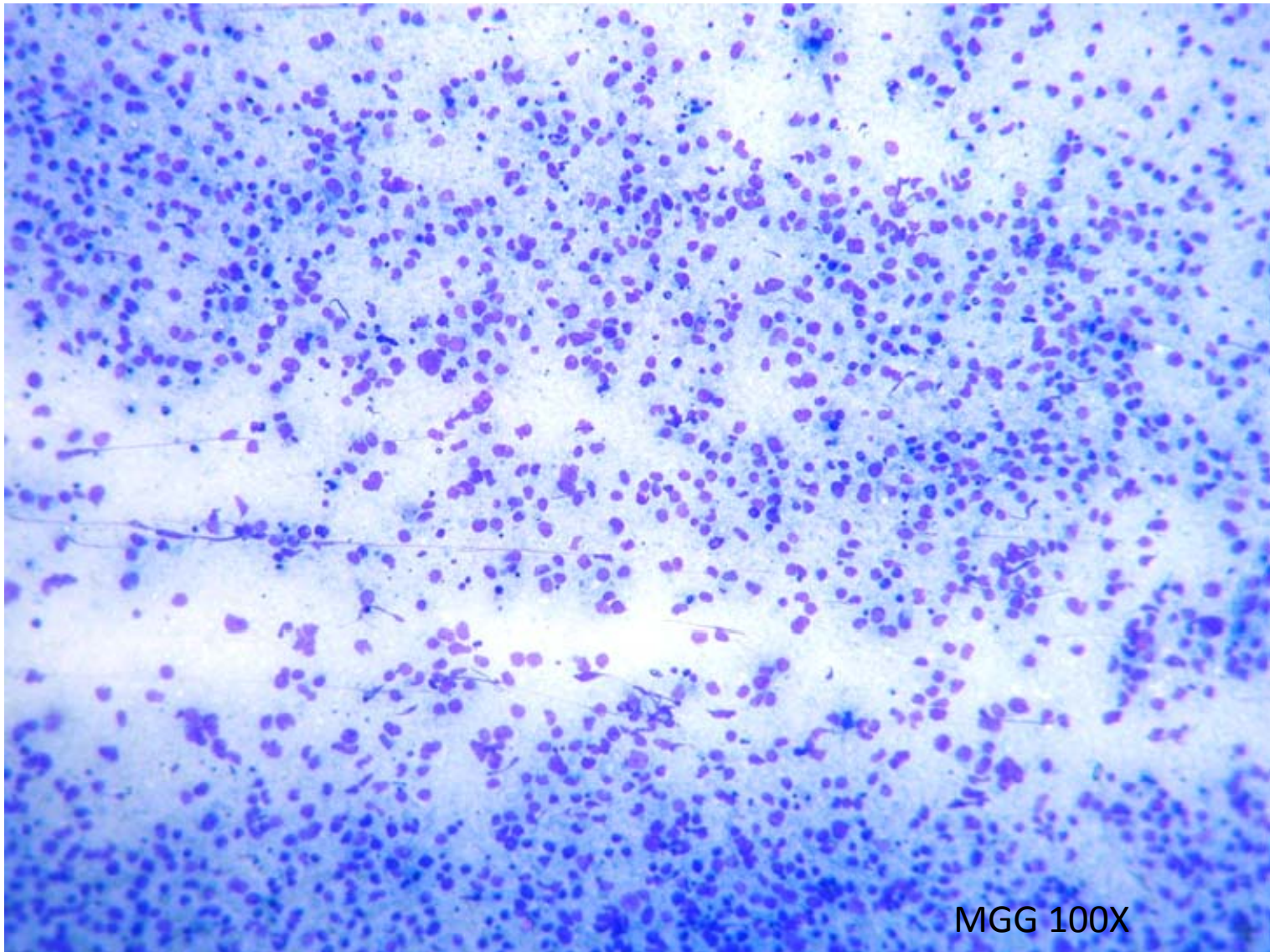


# CASE 2

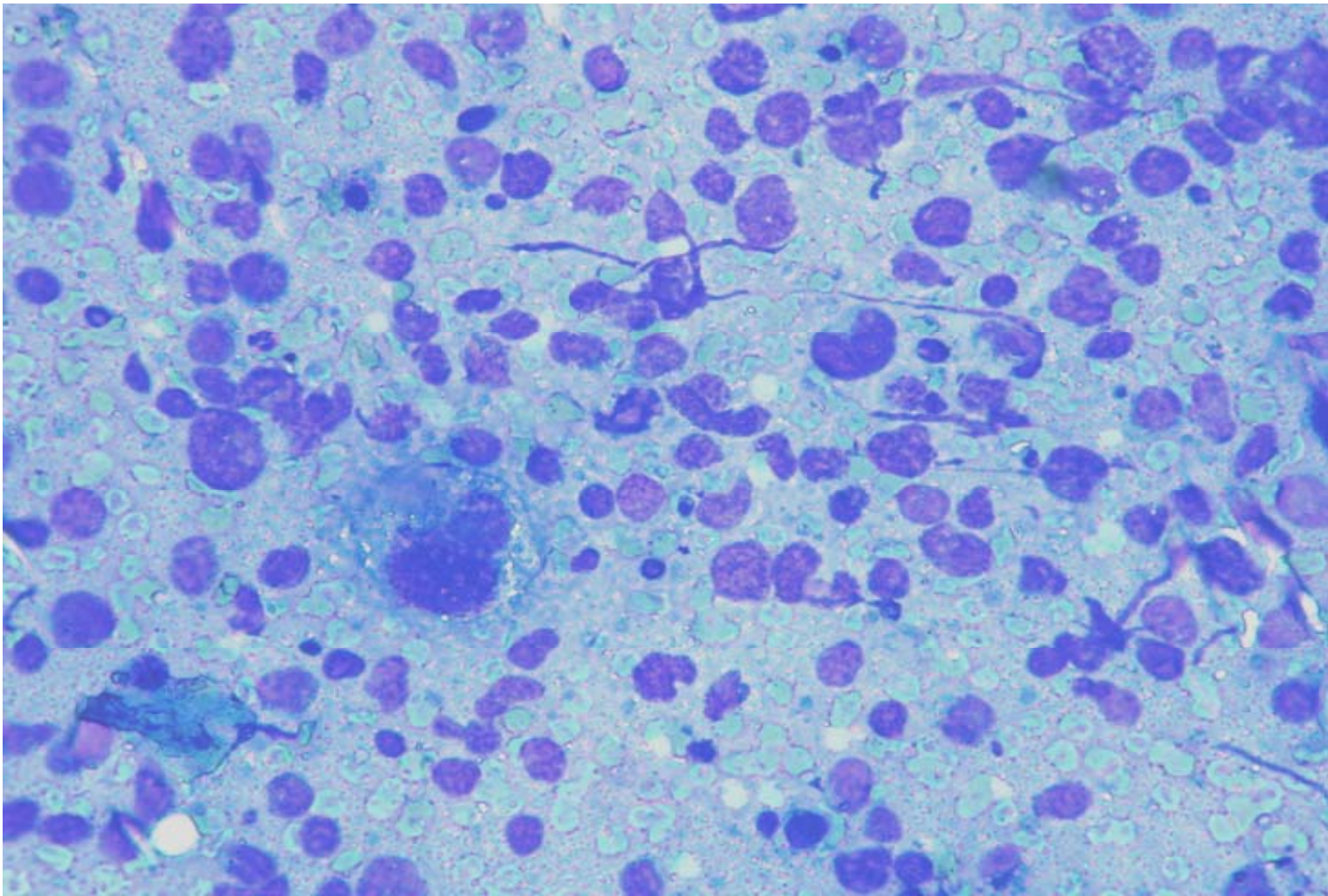
- 51 year old male with symptoms of obstructive jaundice
- **Medical history:** parotitis and tonsillectomy in childhood
- **Abdominal CT scan:** liver tumor with enlarged lymph nodes in area of truncus celiacus and portae hepatis
- **Clinical examination:** There was no evidence of lymphadenopathy in any other region
- **Subacute hepatitis B infection** (diagnosed during hospitalization)



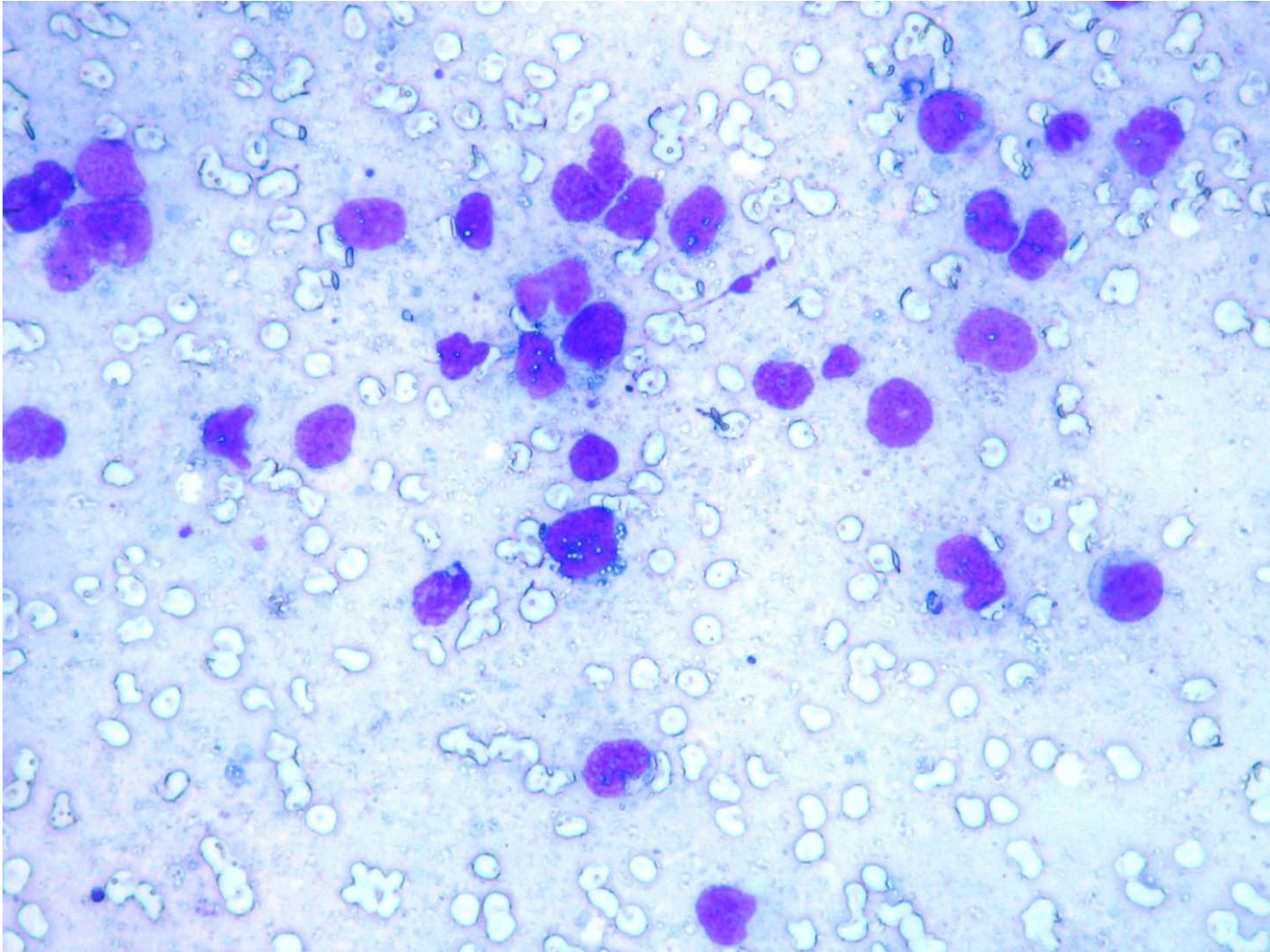
- **US guided FNA of abdominal tumor (cytologic picture):**
- cellular smear, with many isolated atypical, partially poorly preserved, medium to large sized lymphatic cells, some giant and multinucleated cells, many mitotic figures, atypical naked nuclei, amorphous extracellular material

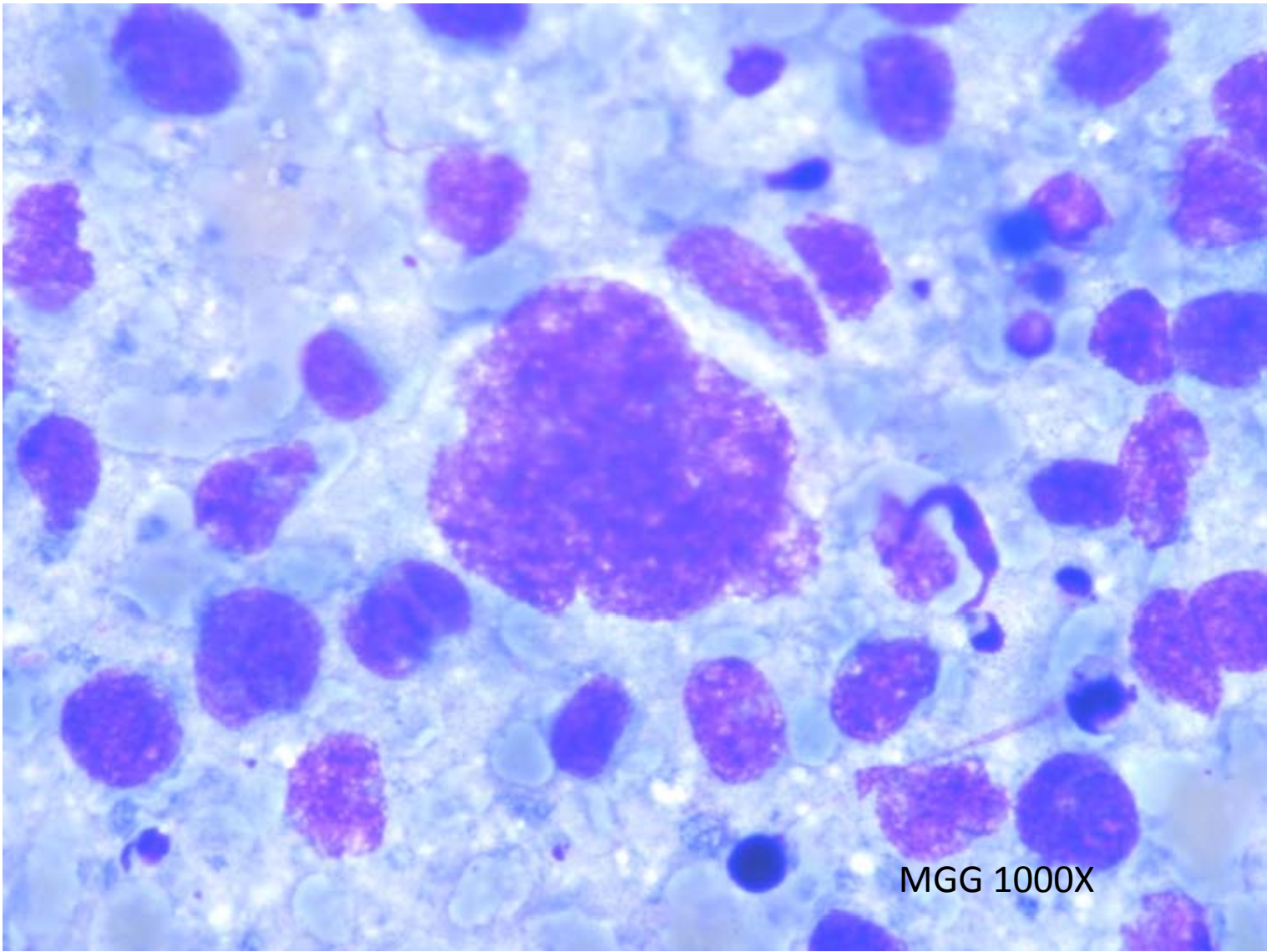


MGG 100X



MGG 400X





MGG 1000X